




# YOGA

Te faz bem




**TAKING CARE  
OF YOU  
AS  
REALLY  
YOU DESERVE.**

Since 1980, we have been manufacturing pieces that provide the care your body deserves. In this catalog, you will find our product lines, each one with its own characteristics and particularities, but all with the same quality and ideal: to take care of you as you really deserve.



# SUMMARY

<b>PREMIUM LINE</b>	<b>05</b>
ESTHETICS AND POST-SURGICAL	06
PREGNANT	60
POST-PARTUM	64
MALE	68
REPARATORY	78
SHAPING LINGERIE	88
FITNESS	120
<b>LIGHT LINE</b>	<b>133</b>
ESTHETICS AND POST-SURGICAL	134
<b>SOFT LINE</b>	<b>141</b>
ESTHETICS AND POST-SURGICAL	142
PREGNANT & POST-PARTUM	176
MALE	180





# P R E M I U M

## MAIN FEATURE: HIGHER COMPRESSION AND CUSTOM MANUFACTURING

The pioneer in the market. It offers exclusive fabric, grammage, and power with high technology. It is a line that has the differential of customizing the products to the measurements of each client.

**Composition:** 90% polyamide and 10% elastane.



P R E M I U M

# ESTHETICS AND POST-SURGERY







**3001 X**

Pre-molded bust shaper with cut-out.



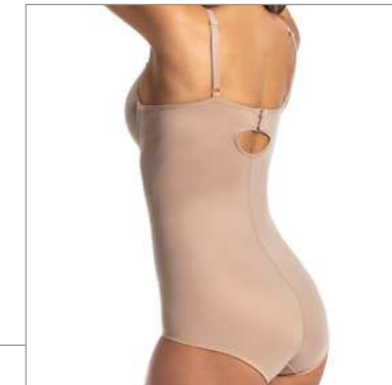
**3001**

Bust shaper with cut-out sewing.



**3001/3030 X**

Bust shaper pre-shaped without cut-out, regatta strap.



**3001 SS**

Girdle with bulge.



**3001 DB**

Girdle with bulge, optional straps.



**3001 SS REN**

Girdle with lace-covered bulge.





**3022 S/C X**

Bust shaper pre-molded without cutout.



**3022 X**

Bust shaper pre-molded with cutout.



**3022 J X**

Bust shaper pre-molded without cut-out, with foldable finish.



**3022/3326 SS**

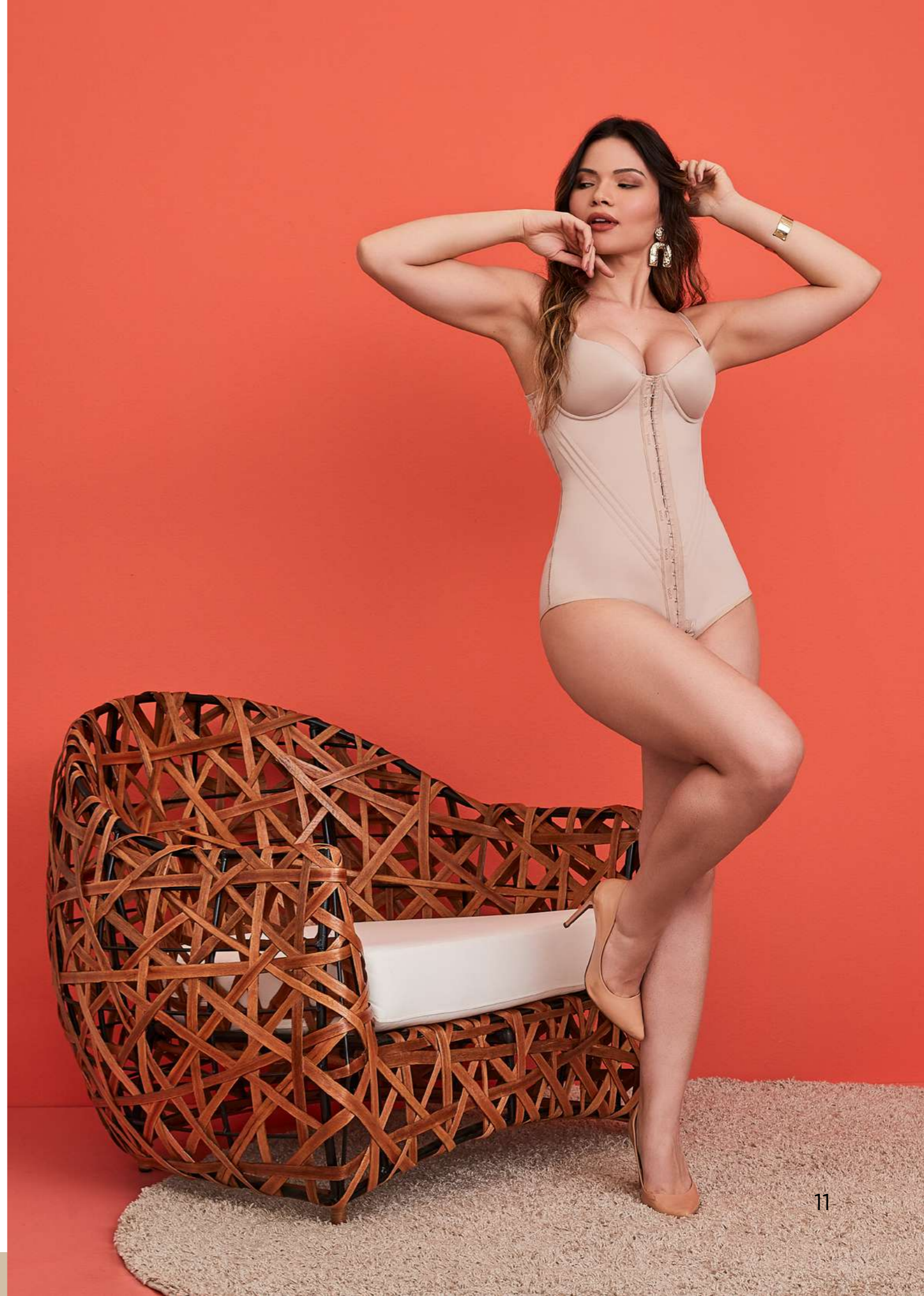
Girdle with bulge, 12 flexible fins.

Option: DB bust with optional straps.



**3022 SLEEVES X**

Shaper with sleeves, pre-shaped bust without cut-out.







**3002 X**

Bust shaper pre-molded with cut-out.



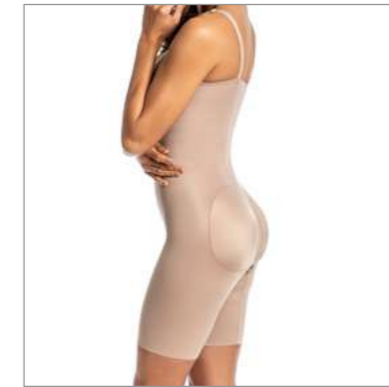
**3002 J X**

Pre-molded bust shaper without cut-out, foldable finish.



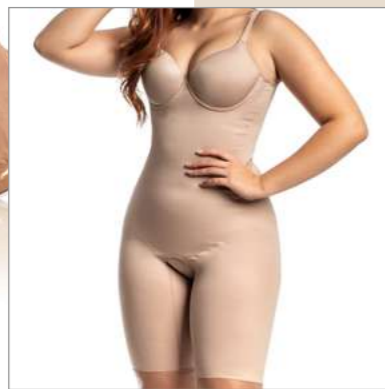
**3019 X**

Pre-molded bust shaper with cut-out.



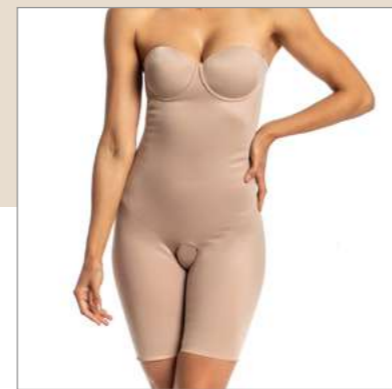
**3019 GLUTEAL PROSTHESIS X**

Girdle with lycra for gluteal prosthesis, pre-shaped bust with cut-out.



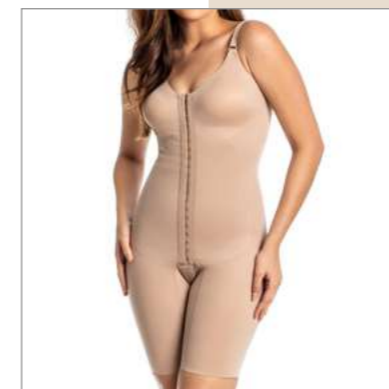
**3002 SS**

Shaper with bulge.



**3002 DB**

Girdle with bulge, optional straps.



**3019 S/C X**

Bust shaper pre-molded without cut-out.

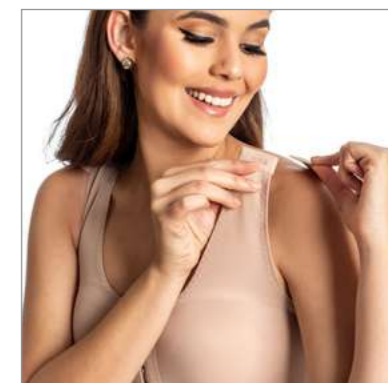


**3019 J X**

Bust modeler pre-molded without cut-out, folding finish.

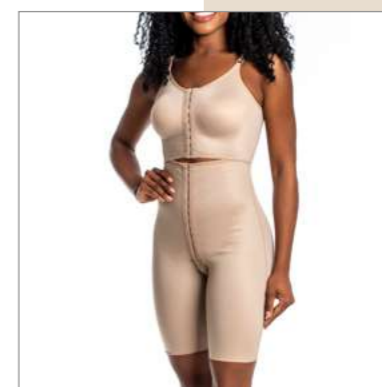






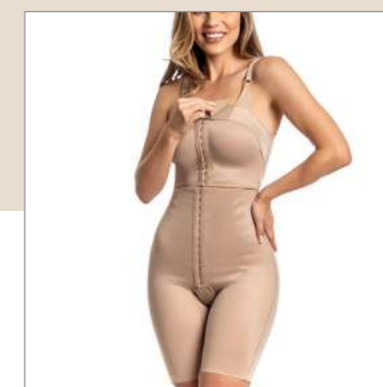
**3019/3026 X**

Shaper with front split, pre-shaped bust with no cutout, regatta straps with clasp.



**3019/3026 J X**

Shaper with front split, pre-shaped bust without cutout, foldable finish.



**3019/3026 J SH X**

Girdle with band over the bust, front split, pre-shaped bust without cutout, foldable finish.

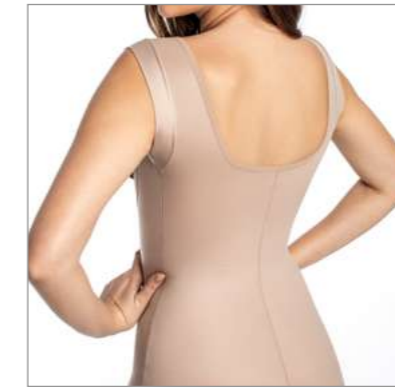


**3019 SLEEVES X**

Girdle with sleeves, pre-shaped bust no cut-out.

**3019/3030 X**

Bust shaper pre-shaped without cut-out, regatta strap.



**3297**

No-bust girdle, regatta strap with lycra armholes.

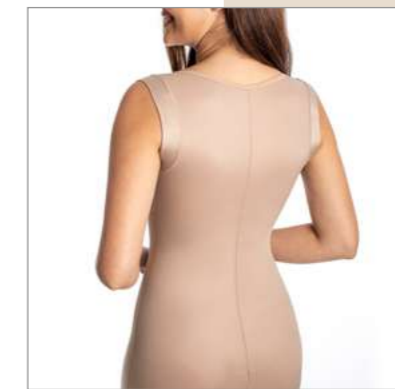


Note: With optional adapter for straps.



**3019/3041 X**

Bust shaper with no cut-out, regatta strap with armholes in lycra.



**3297 A**

No-bust girdle, regatta strap with lycra armholes, high back..

Note: With optional adapter for straps.



**3019 SB**

No-Bust Girdle.





**3381**

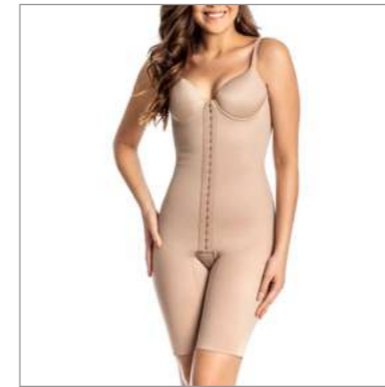
Lipo HD girdle, with flexible cylinders, no bust, regatta strap with lycra armholes.

Option: With flexible foams - 3380.

**3378**

Lipo HD girdle, with front split, flexible foams, pre-shaped bust without cutout, regatta strap with clasp, lycra armhole.

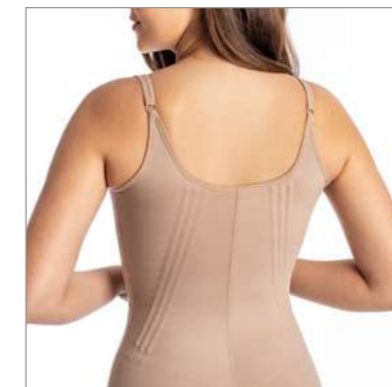
Option: With flexible cylinders: - 3379.



**3019 SS**

Girdle with bulge.

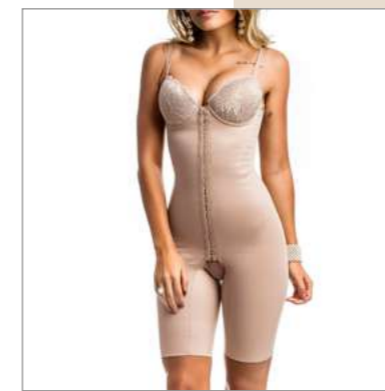
Option: DB bustier with optional straps.



**3019/3326 SS**

Girdle with bulge, 12 flexible fins.

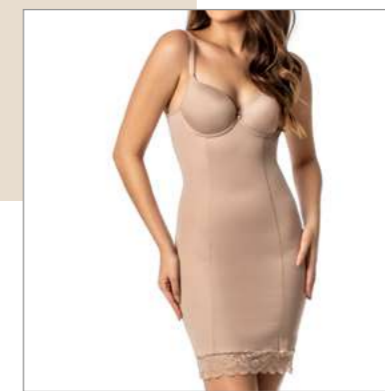
Option: DB bustier with optional straps.



**3019 SS REN**

Girdle with a lace-covered bust.

Option: Bulge DB REN with optional straps.



**3122 SS**

Shaping dress with bulge.

Option: Bulge DB with optional straps.







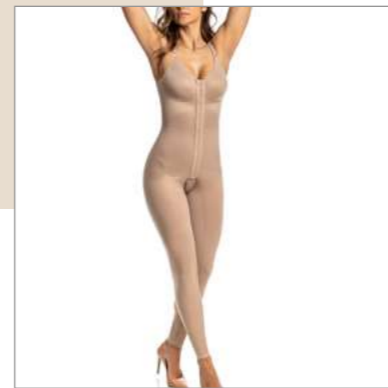
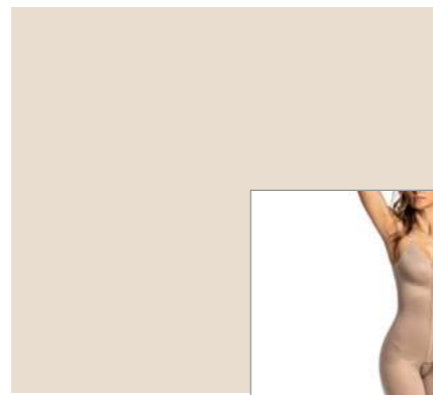
**3018/3041 X**

Bust shaper with no cut-out, regatta strap with armholes in lycra.



**3018/3026 X**

Shaper with front split, pre-shaped bust with no cutout, regatta strap with clasp.



**3018 X**

Bust shaper pre-molded with cutout.

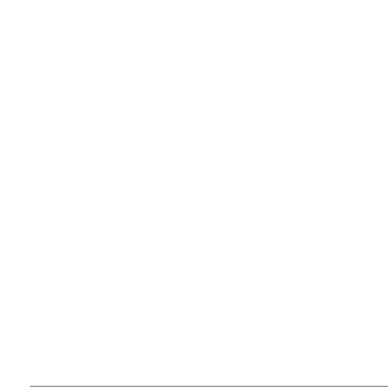
**3017 AB X**

Bust shaper pre-molded with cutout.



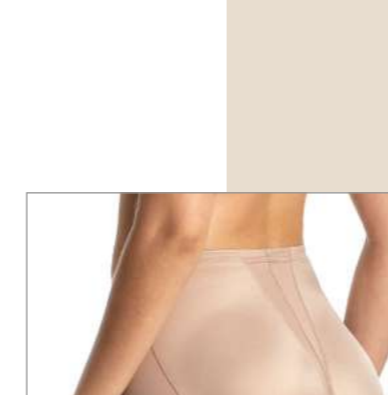
**3006 A**

Panties with double waistband.



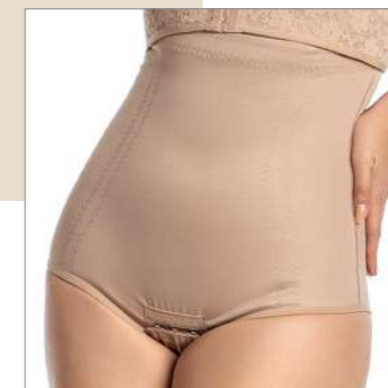
**3006**

Panties with front reinforcement.



**3006 EG**

Panties with gluteal filler.



**3028**

High-Waisted Panties.

Note: With optional suspender straps.



**3004**

Shorts with open bottom.



**3004 AS**

Shorts with double waistband, open bottom.



**3004 EG**

Shorts with gluteal filler.



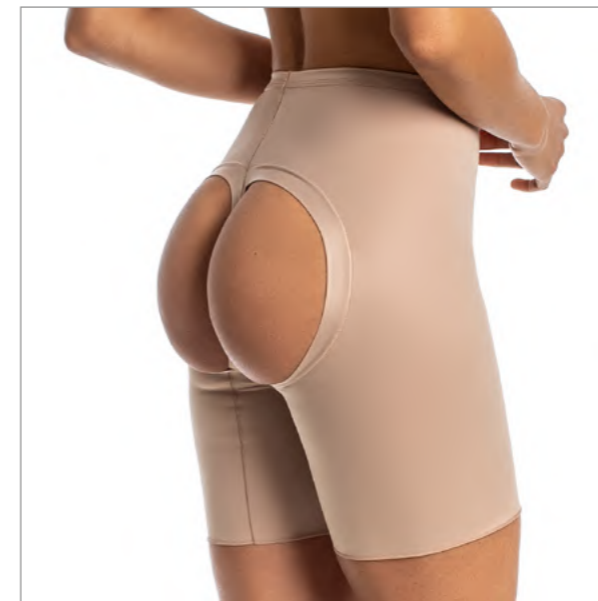
**3004 LG**

"Gluteus lift" shorts, with a closed bottom.



**3004 REN YS**

Shorts with open bottom, lace on the legs.



**3004 THONG**

Thong shorts.



**3023**

High-waisted shorts with open bottom.

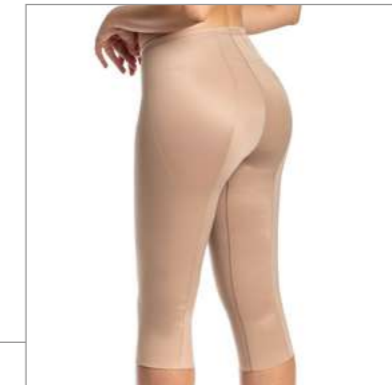
Note: With optional suspender straps.



**3023 THONG**

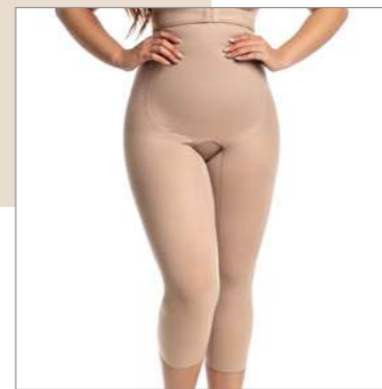
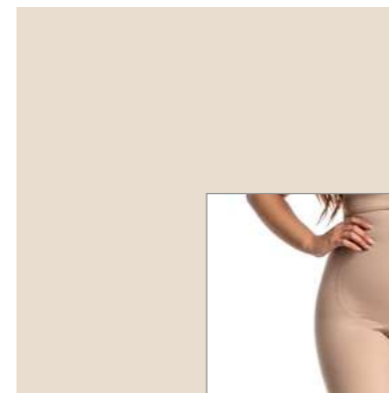
High-waisted shorts,thong.

Note: With optional suspender straps.



**3024 LG**

"Gluteal lift" pants, with closed bottom.



**3025**

High-waisted pants with open bottom.

Note: With optional suspender straps.

**3025 AB**

High-waisted pants with open bottom.

Note: With optional suspender straps.



**3024**

Pants with open bottom.





**3029 ABF**

High-waisted panties.

Note: With optional  
suspender straps.



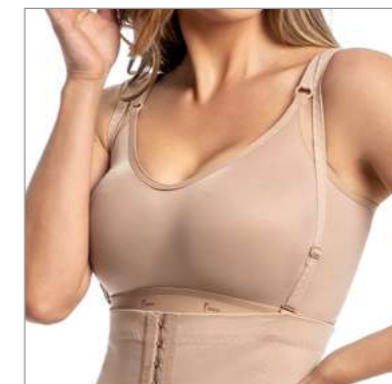
**3029 ABL**

High-waisted panties.

Note: With optional  
suspender straps.



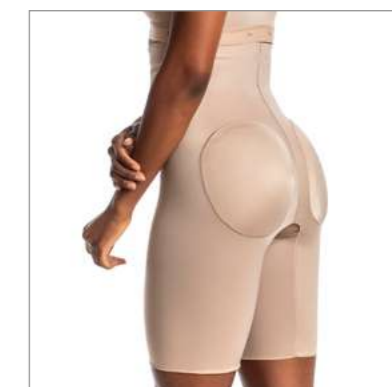
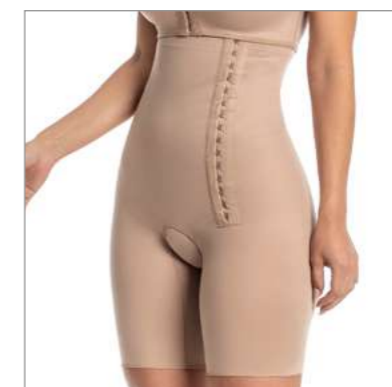
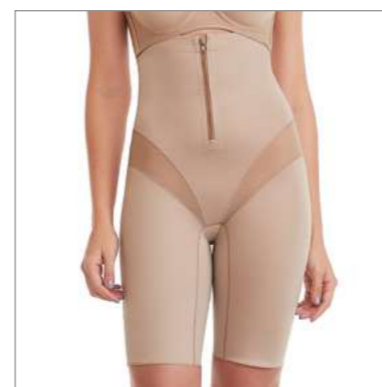




**3026**

High-waisted shorts with open bottom.

Note: With optional suspender straps.



**3440**

Shorts with zipper, power cutouts.

**3026 ABL**

High waisted shorts, with open bottom.

Note: With optional suspender straps.

**3026 GLUTEAL PROSTHETICS**

High waisted shorts, with lycra for gluteal prosthesis, open bottom.

Note: With optional suspender straps.





**3014 B**

Shaping belt with 6 flexible fins.

Option: B/8 (with 8 fins).



**3145**

Shaping girdle goufre, with 10 flexible fins.



**3075 E**

Cyrie shaping girdle, with 12 flexible fins, 12 cm elastic at the waist.

Option: 3075 E-2 with 24 cm elastic band.



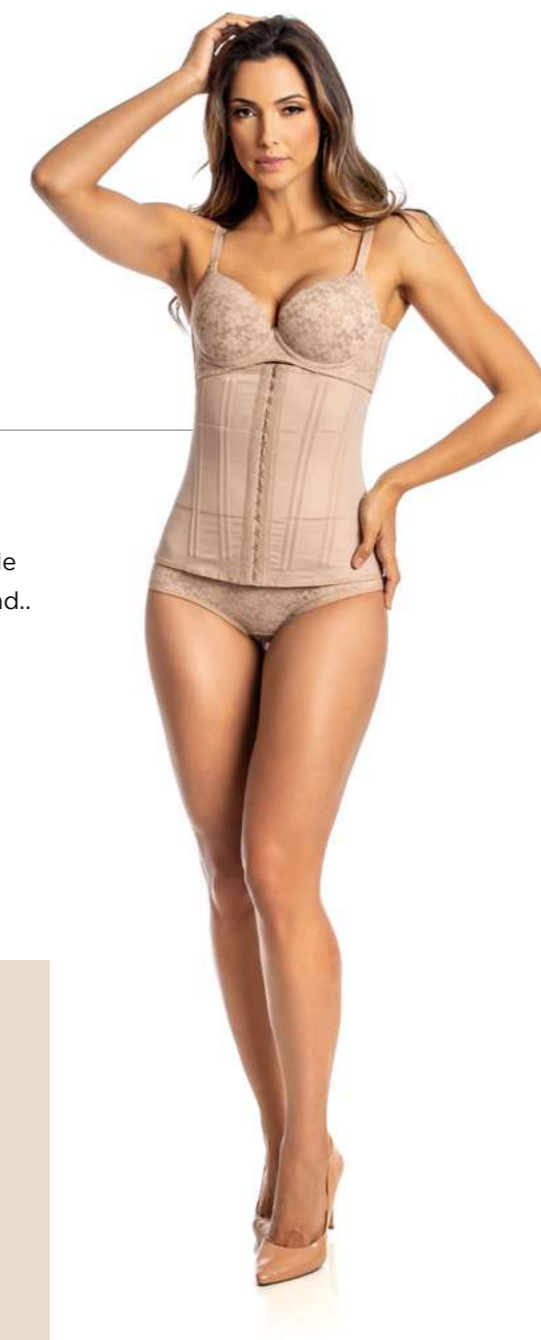




Option: 3075-2 with 24 cm elastic band.

**3075**

Shaping belt with 12 flexible fins, 12 cm elastic waistband..



**3325**

Shaping belt with 12 flexible fins.





**3075 A**

Shaping belt with 12 flexible fins, elastic waist 12 cm, frontal lace.

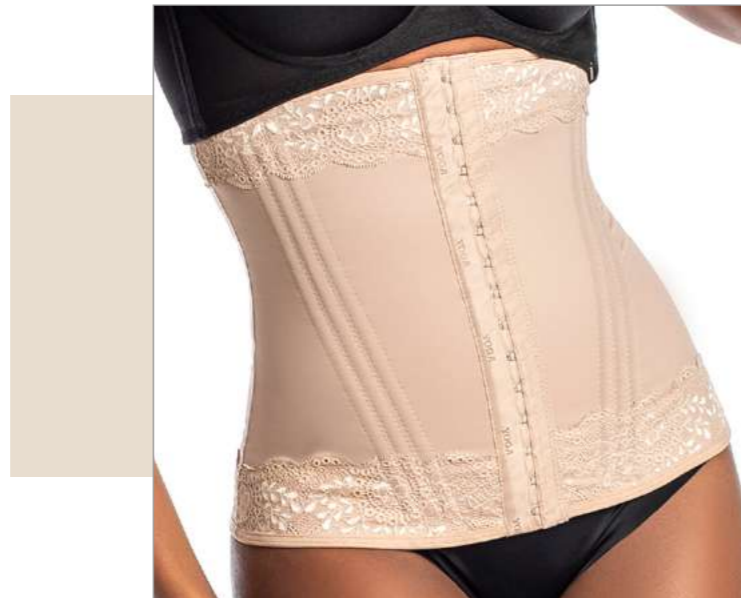
Option: 3075 A-2 with 24 cm elastic band.



**3075 B**

Shaping girdle with 12 flexible fins, 12 cm elastic at the waist, lace on the circumference.

Option: 3075 B-2 with 24 cm elastic band.



**3325 B**

Shaping girdle with 12 flexible fins, lace on the circumference..







**3326 SB**  
No-bust Corset with  
12 flexible fins.



**3056 C/REC X**  
Bust corset pre-molded  
with cut-out, 6 flexible fins.



**3056 X**  
Bust corset pre-shaped  
with no cutout, 6 flexible  
fins.



**3056 SB**  
No-bust Corset with 4 flexible fins.



**3076 S X**  
Pre-molded bust corset no cut-out, 12  
flexible fins, 12 cm elastic waist.

Opção: 3076 S-2 com elástico de 24 cm.



**3326 X**

Bust corset pre-shaped with no cutout, 12 flexible fins.



**3057 X**

Bust corset pre-shaped without cutout, 6 flexible fins, regatta strap.





pt/ch

### 3326 LAISE X

Bust corset pre-shaped with cutout and lined with laise, 12 flexible fins.

Colors: pt/ch, black, chocolate and white.



### 3056 REN

Bust corset is lace-covered and stitched, with 6 flexible fins.

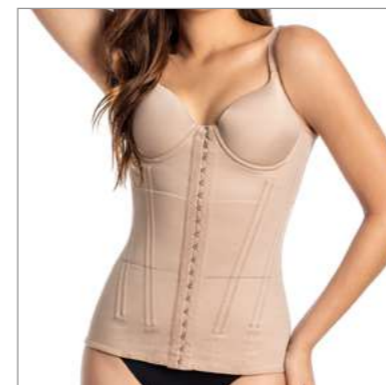


### 3326 B

Bust corset sewn with cutout, 12 flexible fins, lace at bust and circumference.







**3076 SS**

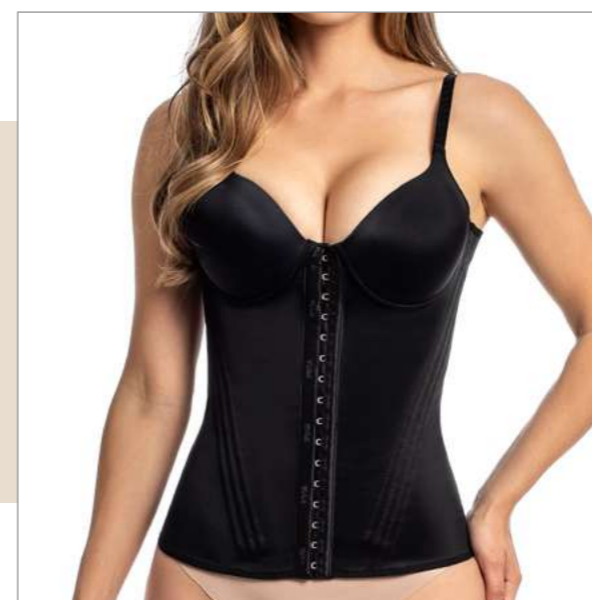
Corset with bulge,  
12 flexible fins, 12 cm elastic  
waist.

Option: DB-Shirt  
with optional straps.

**3056 SS**

Corset com bojo,  
6 barbatanas flexíveis.

Option: DB Bulge  
with optional straps.



**3326 SS**

Corset with bulge,  
12 flexible fins.

Option: DB Bulge with optional straps.





**3056 SS/10**

Corset with a lace and crystal-coated bust, 6 flexible fins.

Option: DB/10 bulge with optional straps.



**3056 SS REN**

Corset with lace covered bust, 6 flexible fins.



**3056 DB REN**

Corset with lace covered bulge, 6 flexible fins, optional straps.



**3076 A SS**

Corset with bulge, 12 flexible fins, 12 cm elastic waist, bust and front lace.

Option: 3076 A SS-2 with 24 cm elastic band.



**3076 A DB**

Corset with bulge, 12 flexible fins, 12 cm elastic waist, optional straps, lace on the bust and front.

Option: 3076 A DB-2 with 24 cm elastic band.



**3076 B SS**

Corset with bulge, 12 flexible fins, 12 cm elastic at the waist, lace at the bust and circumference.

Option: 3076 B SS-2 with 24 cm elastic band.



**3326 SS B**

Corset with bulge, 12 flexible fins, lace at the bust and circumference.

Option: DB Bulge with optional straps.



**3076 G DB**

Corset goufre with bulge, 12 flexible fins, 12 cm elastic waist, optional straps.

Option: 3076 G DB-2 with 24 cm elastic band.



**3076 E DB**

Corset cirê with bulge, 12 flexible fins, 12 cm elastic waist, optional straps.

Option: 3076 E DB-2 with 24 cm elastic band.



**3069 F**

No-bust T-Shirt with foam on the straps and reinforcement on the back.



**3069 A F**

No-bust T-Shirt with foam on the straps, back reinforcement and front opening.



**3076 E SS**

Corset cirê with bulge, 12 flexible fins, 12 cm elastic waist..

Option: 3076 E SS-2 with 24 cm elastic band.



**3069 A/B F**

No-bust T-shirt, with foam on the straps, reinforcement on the back, 4 flexible fins and front opening.





**3376 X**

Customized elastic bra, pre-shaped bust without cutouts and without reinforcement and without reinforcement, fold-over finish.



**3013 S/C X**

Bra with pre-shaped bust without cutouts and without reinforcement.



**3013 X**

Pre-shaped bust bra with cut-outs.



**3013 T X**

Pre-shaped bust bra with cut-outs and reinforcement, flexible fins on the sides.



**3013 G X**

Half-strap bra with pre-shaped bust.



**3015 SN**

Brassiere with bulge, swimmer back.



**3030 SS**

Brassiere with bulge, regatta strap.



**3013 SS**

Brassiere with bulge



**3015 J X**

Pre-shaped bust bra with reinforcement and no cutout, fold-over finish.



**3015 X**

Pre-shaped bust bra with reinforcement and no cutout.

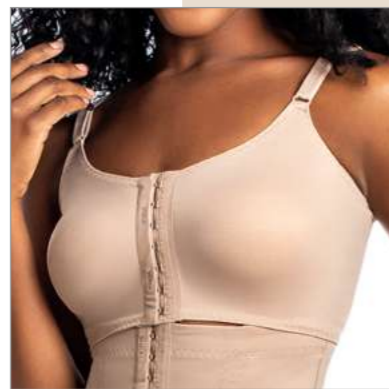
**3015 O X**

Customized elastic bra, pre-shaped bust without cutouts and without reinforcement and without reinforcement, fold-over finish.



**3030 AL 3015 X**

Pre-shaped bust bra without cut-outs and without reinforcement, side sewing.



**3015 S/C X**

Pre-shaped bust bra without cutouts and without reinforcement.



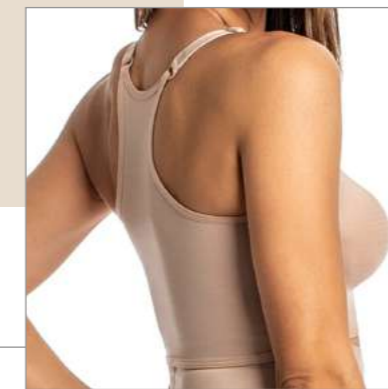
**3015 E X**

Pre-shaped bust bra with no cutout and no reinforcement, side seam, fold-over finish.



**3015 J SWIMMER X**

Swimming bra, pre-molded bust pre-molded with reinforcement and without cutouts, in folding finish.







**3015 B**

Bra bust seam with cutout and reinforcement, regatta strap.



**3015/3030 X**

Pre-shaped bra bust with reinforcement and no cutout, regatta strap.



**3030 X**

Preformed bra bust without cutouts and without reinforcement, regatta strap.



**3015/3030 X REF. 3069**

Preformed bra bust without cutouts, with back reinforcement, regatta strap.







**3015 SH X**

Brassiere with band over the bust, folding finish, pre-shaped bust without cutout and without reinforcement.



**3015 SH-2 X**

Double-strap bra with a fold-over finish, pre-shaped bust with no cutout and no reinforcement.



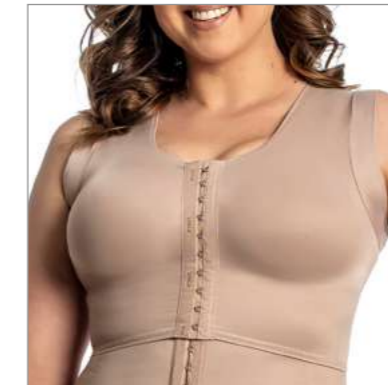
**3050 A**

Band with lace to the bust, fold-over finish.



**3063**

Elastic band for the bust.



**3030/3041 X**

Pre-shaped bra bust without cutouts and without reinforcement, regatta strap with lycra armholes.



**3041 F X**

Pre-shaped bust vest with no cutout, regatta strap with lycra armholes.



**3030 SLEEVES X**

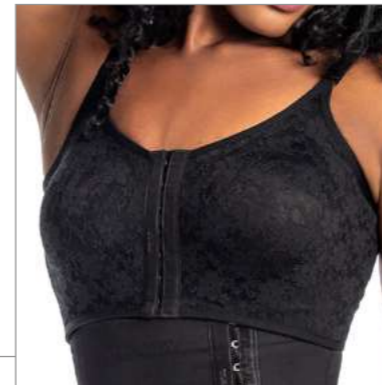
Bra with sleeves, pre-shaped bust with no cutout and no reinforcement.



**3042 F X**

Vest with sleeves, pre-shaped bust with no cutout.

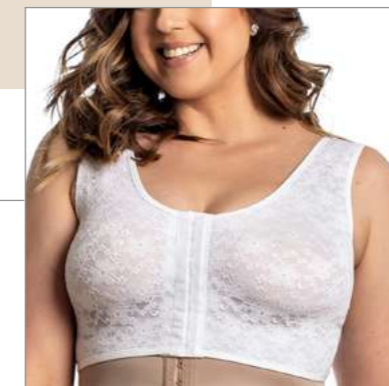
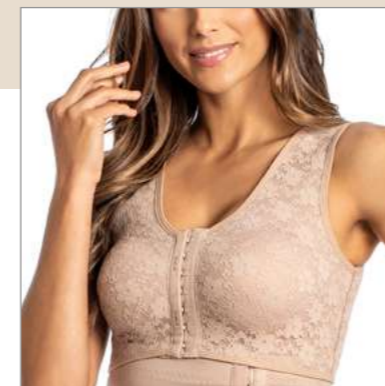




**3015 J LAISE X**

Laise covered bra, pre-shaped bust with no cutout and reinforcement, folding finish.

Colors: ch/pt, chocolate, black and white.



**3030 J LAISE X**

Laise covered bra, pre-shaped bust with no cutout and no reinforcement, regatta strap, folding finish.

Colors: ch/pt, chocolate, black and white.





**3013 P X**

Bra with opening for prosthesis, pre-shaped bust with cut-out.



**3421**

Brassiere with bulge, opening for prosthesis, wide foam straps.

**3048 E**

Prótese mamária de espuma.



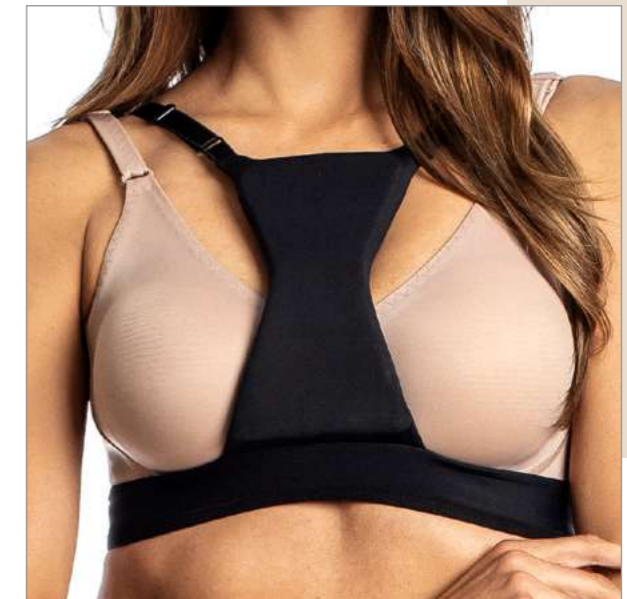
**3129**

Lace bra, with opening for prosthesis.



**3420**

Double bra, no bust, with 20 flexible fins.



**3304**

Bra for the medial region between the breasts.



P R E M I U M  
PREGNANT







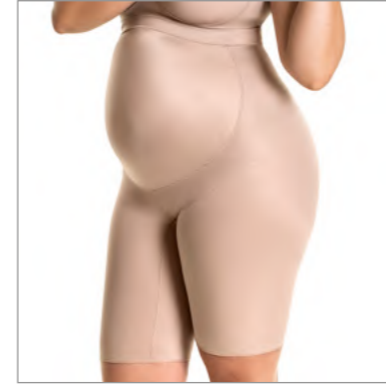
**3032 X**

Bust shaper pre-molded with cutout..



**3033 X**

Bust shaper pre-molded with cut-out, closed bottom.



**3034 FF**

High waisted shorts, with a closed bottom.

**3035 FF CF**

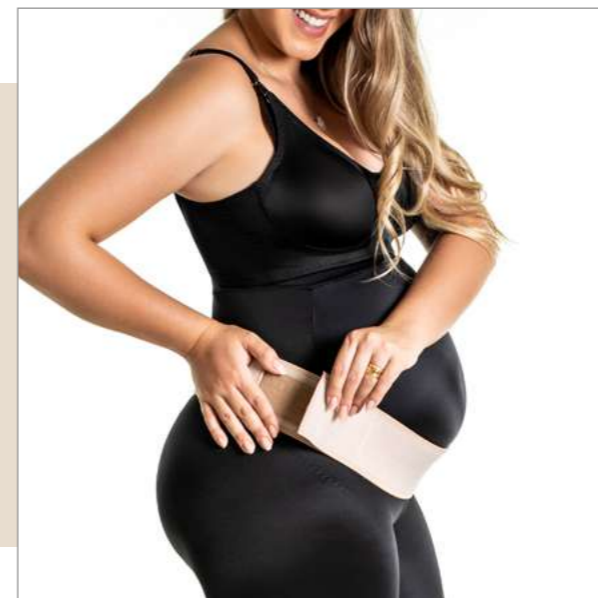
High-waisted pantyhose with closed bottom and heel.

Options:  
Open bottom (FA).  
Open heel (CA).



**3034 A**

High waisted panties.



**3065**

Elastic band.



P R E M I U M  
POST-PARTUM





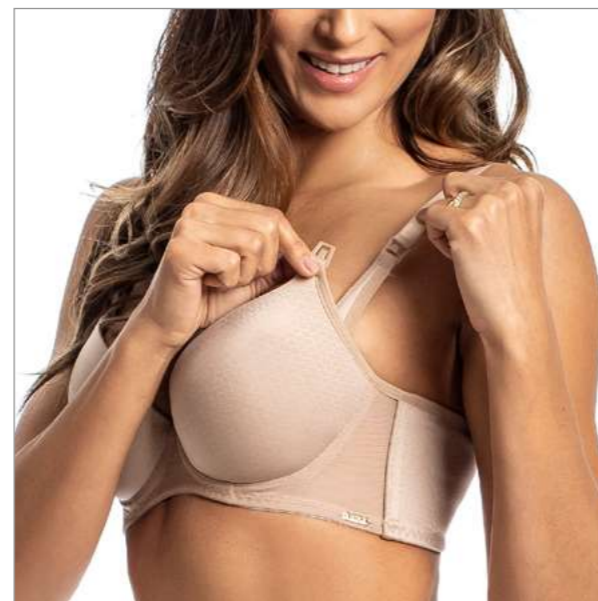


**3388 CA**

Printed tulle bulge-covered brassiere.

**3389**

Panties with printed tulle detail.



**3141 CA**

Goufre bra with bulge.



**3168 CA**

Brassiere with cup lined with lace.

Colors: ch/pt, chocolate, black and white.

**3026**

High-waisted shorts with an open bottom.

Note: With optional suspender straps.



**3168 CA**

Brassiere with cup lined with lace.

Colors: ch/pt, chocolate, black and white.

**3013 CA X**

Pre-shaped bra bust with cut-outs.

**3029 ABL**

High-waisted panties.

Note: With optional suspender straps.





P R E M I U M  
MALE







**3009 TC**  
T-shirt.



**3009/3041 TC**  
T-shirt with a high neckline,  
lycra armholes.



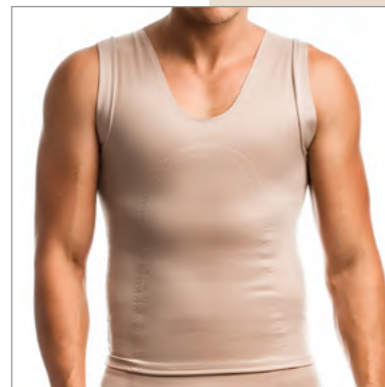
**3009/3041 TC AB**  
T-shirt with a high neckline,  
lycra armholes and a front  
opening.



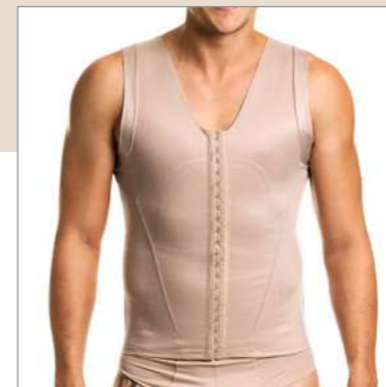
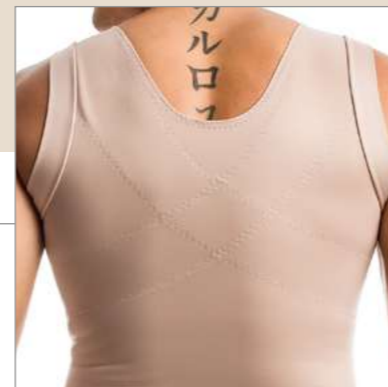
**3069 A H**  
T-shirt with back  
reinforcement, lycra  
armholes and front  
opening.



**3009 TC AB**  
T-shirt.



**3069 H**  
T-shirt with reinforcement in the  
back, lycra armholes.



**3069 A/B H**  
T-shirt with back  
reinforcement, 4 flexible  
fins, lycra armholes  
and front opening,

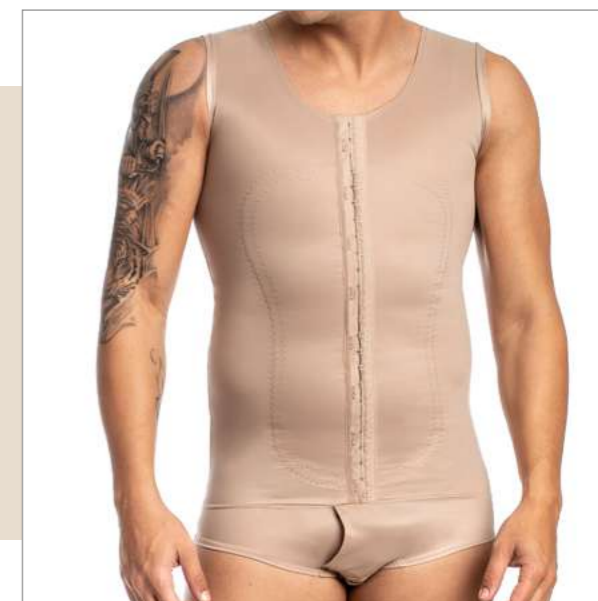




**3009**  
Shaper.



**3009 AB**  
Shaper.



**3009/3041 AB**  
High-cut shaper, lycra  
armholes.



P R E M I U M

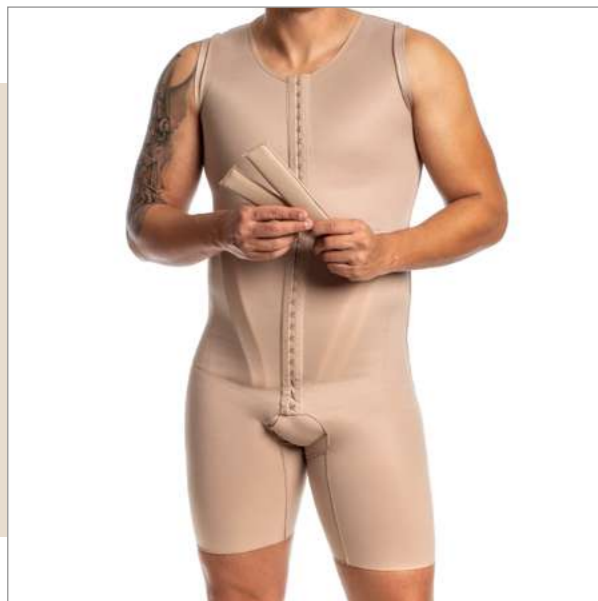


**3009 YS**

Shaper.

**3009/3041 YS AB**

High-cut shaper, lycra armholes.



**3423**

Shaper for Lipo HD, with flexible foams.

Option: With flexible cylinders - 3424.







**3014 H**

Abdonimal band.

Note: With optional  
suspender straps.



**3029 ABL M**

High Waist Belt.

Note: With optional  
suspender straps.



**3026 M**

High waisted shorts, open  
bottom.

Note: With optional  
suspender straps.



**3041 H**

Vest with lycra  
armholes.



**3042 H**

Vest with sleeves.

**3009 H**

Underpants.



P R E M I U M

# REPAIRING







**3062-3**

3 piece elastic band, 100 cm in circumference.

Option: With lining (F).



**3014 25**

Elastic band with Velcro (25 cm high).

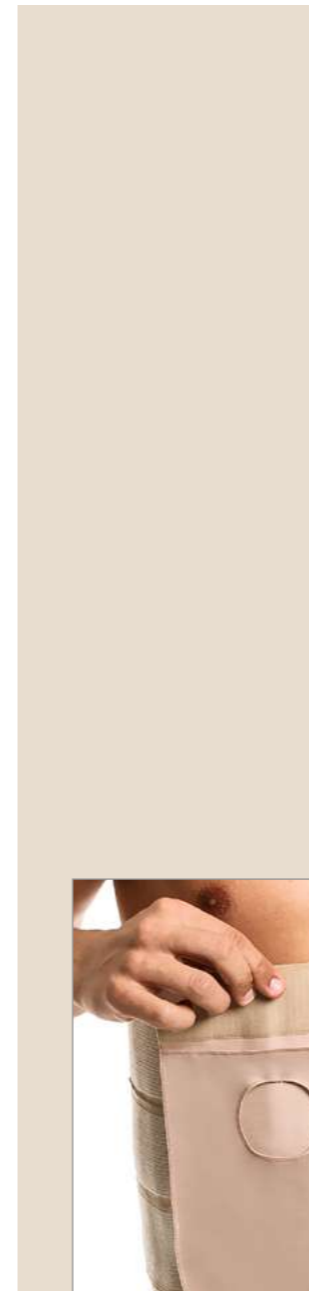
Size options: 20 cm, 30 cm and 35 cm.



**3062-4**

Elastic band with 4 buds, 130 cm in circumference.

Option: With lining (F)



**3062-3 C**

3 piece elastic band, 130 cm in circumference, with opening for colostomy bag.



**3062-3 B**

Elastic band 3 buds, 130 cm circumference, with support for colostomy bag.





**3039 AC**

Bracelet with Velcro on the back.



**3036 C/D (pair)**

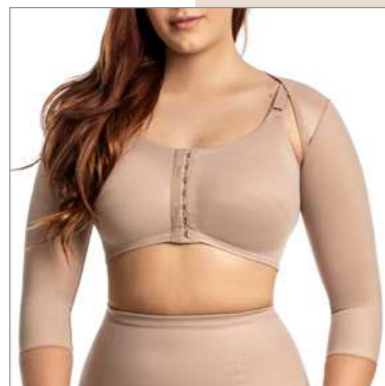
Glove with fingers

Options:  
Fingerless (S/D).  
Single glove.

**3039 H/L (pair)**

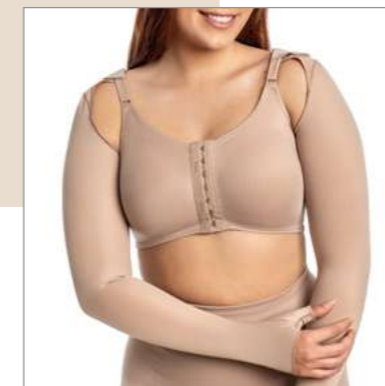
Long sleeve cuff, with thumb attachment.

Options:  
Bracelet with sleeve - 3039/3036 H/L.  
Single bracelet.



**3039 BC**

Bracelet with Velcro on the back, folding finish.



**3039 F/L (pair)**

Long sleeve bra strap, with thumb attachment and bra strap adaptor.

Opções:  
Bracelete com luva - 3039/3036 F/L.  
Bracelete unitário.







**3012 CA FF**

Medium compression pantyhose (18-25 mmHg), open heel and closed bottom.

Options:  
FA (open bottom).  
CF (closed heel). AL (high compression 20-40 mmHg) - open heel only.



**3011 CA**

Medium compression 7/8 stocking (18-25 mmHg), open heel.

Options:  
CF (closed heel). AL (high compression 20-40 mmHg) - open heel only.



**3010 S**

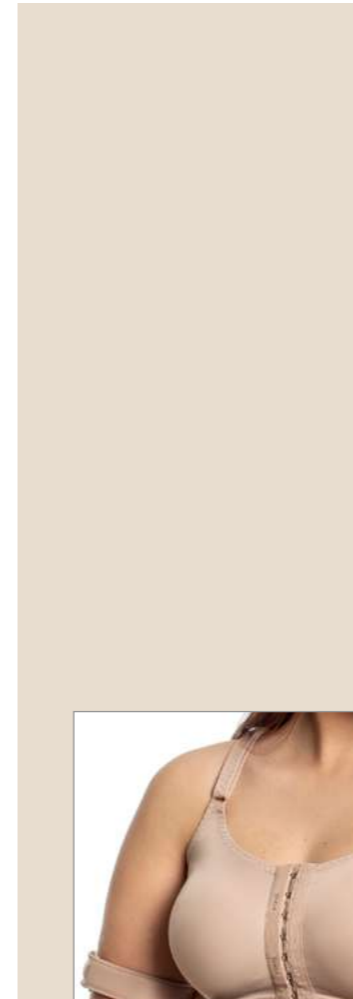
Medium compression sock (18-25mmHg).



**3010 CA**

Medium compression 3/4 sock (18-25 mmHg), open heel.

Options:  
CF (closed heel).  
AL (high compression 20-40 mmHg) - only open heel.



**3048 E**

Foam Breast Prosthesis.



**3176**

Arm Restraining Belt.



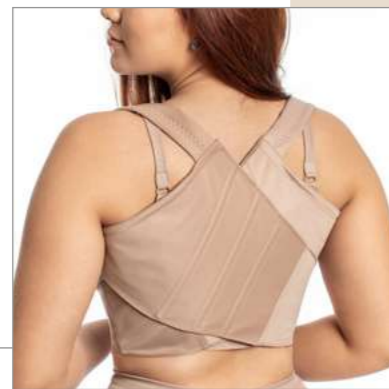
**3047**  
Backstrap with Velcro.



**3038 A**  
Chin strap.



**3038 D**  
Double strap with Velcro.



**3047 B**  
Backstrap with Velcro,  
flexible fins.



**3038 E**  
Strap with Velcro.



**3038 E R**  
Double strap with Velcro,  
foam reinforcement.



**3038 I**  
Band with Velcro, ear  
opening.



P R E M I U M

# SHAPING LINGERIE





**3137 CIRÊ**

Cirê bra with cup,  
optional straps.

**3138 CIRÊ**

High-waisted cirê panties.  
Option: 3138 gouffré.



**3137 GOUFRÊ**

Gouffré bra with cup,  
optional straps.

**3139 GOUFRÊ**

Gouffré panties.  
Option: 3139 cirê.

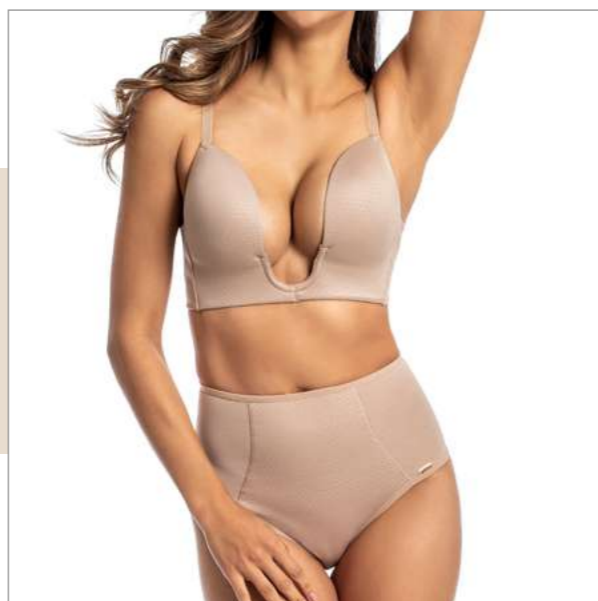


**3141**

Gouffré bra with cup.

**3143**

Gouffré panties.

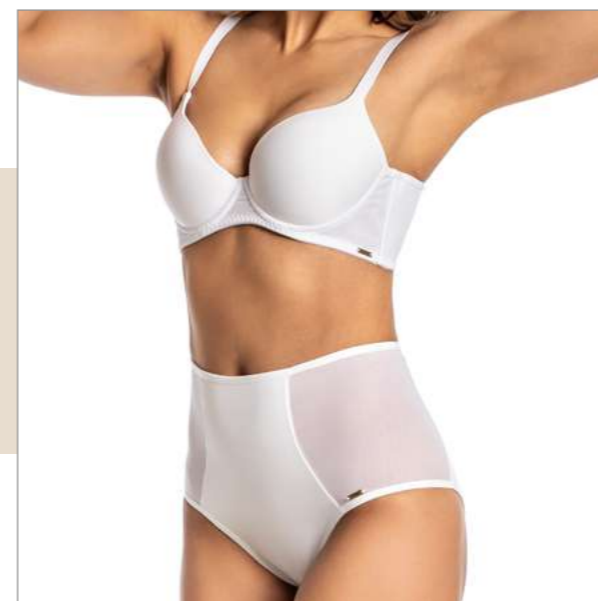


**3289**

Gouffré bra with deep plunge neckline,  
removable back straps.

**3143**

Gouffré panties.







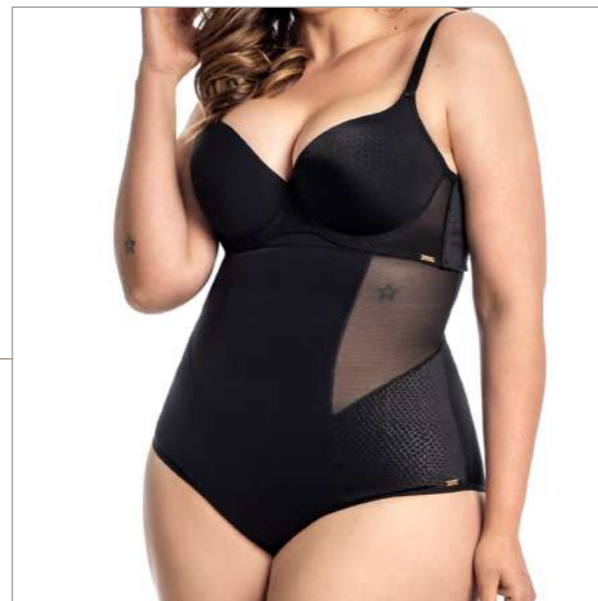
3144



**3144**

Gouffré bra with cup,  
optional straps.

Note: Sizes mini mini to  
large.

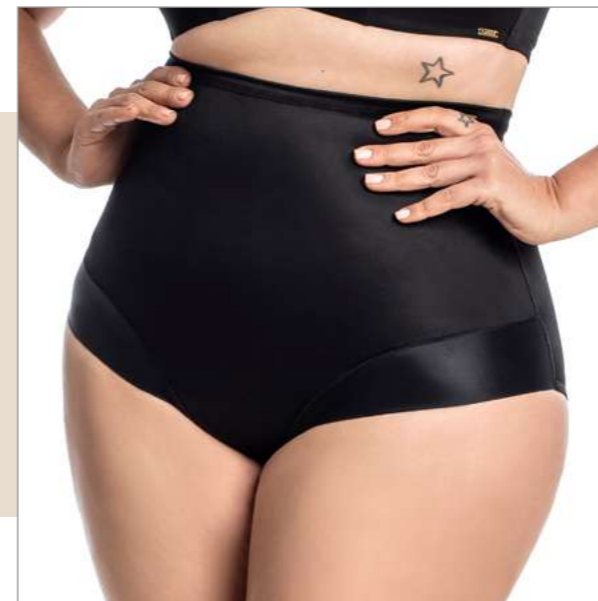


**3141**

Gouffré bra with bulge.

**3142**

High-waisted Gouffré panties.



**3263**

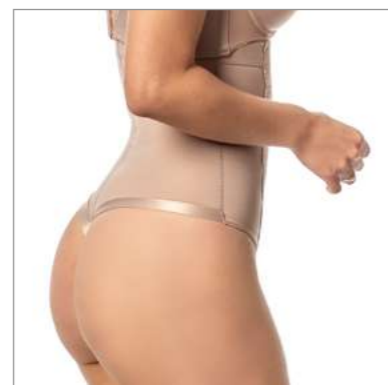
Panties.

**3262**

Plus size bra with bulge.

Note: Sizes medium to SG 54.





**3088 C**

Thong panty,  
lace-up, high waisted.

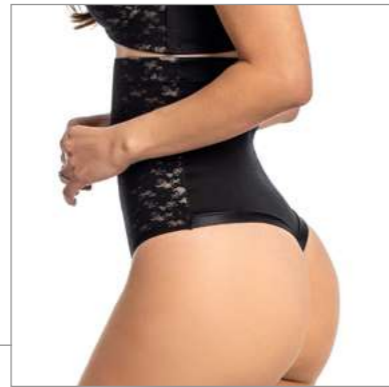


**3088**

Thong panties, high waisted.







**3168**

Brassiere with cup lined with lace.

Colors: ch/pt, choco, black and white.

**3336**

Thong panties, high waisted, lined in lace.

Colors: ch/pt, choco, black and white.



ch/pt



**3127**

Laise-covered shorts.

Colors: ch/pt, choco, black and white.



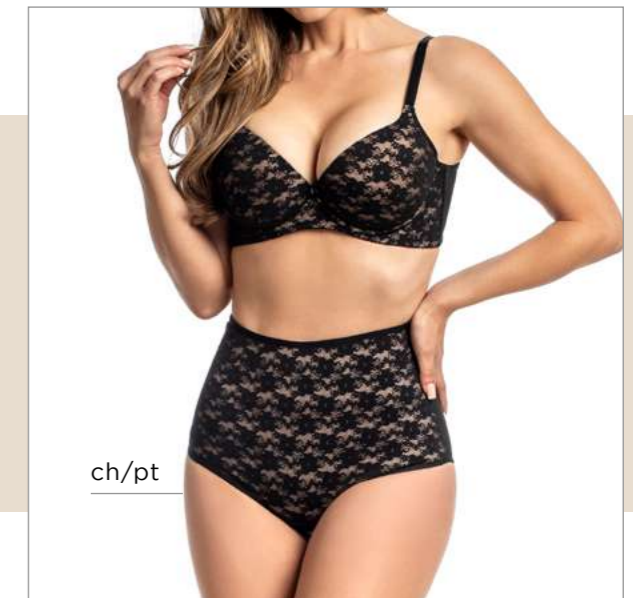




**3168**

Brassiere with cup lined with lace.

Colors: ch/pt, choco, black and white.



**3219**

Laise-covered panties.

Colors: ch/pt, choco, black and white.





**3159**

Panties with lace.



**3160**

High-waisted panties with lace.

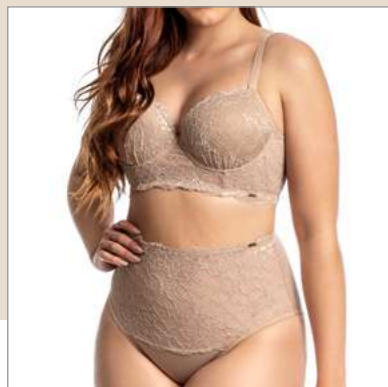


**3340 A**

Brassiere with cup and lace.

**3341**

Panties with lace



**3291**

Bra covered in lace, with a bulge.

**3292**

Panties with lace.

**3158**

Bra with lace-covered cup.

**3084**

High waisted panties, with lace.



**3340 B**

Plus size bra with bulge and lace.

Note.: Sizes medium to SG 52.

**3194**

Brassiere with cup, lace, and optional straps.

**3159**

Panties with lace.

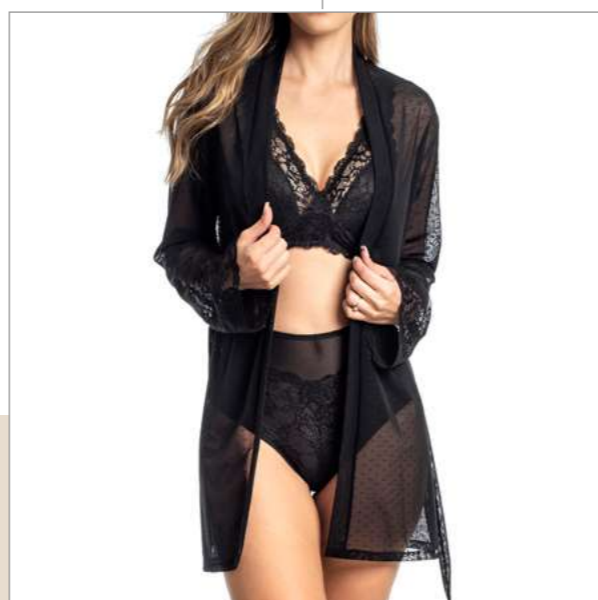




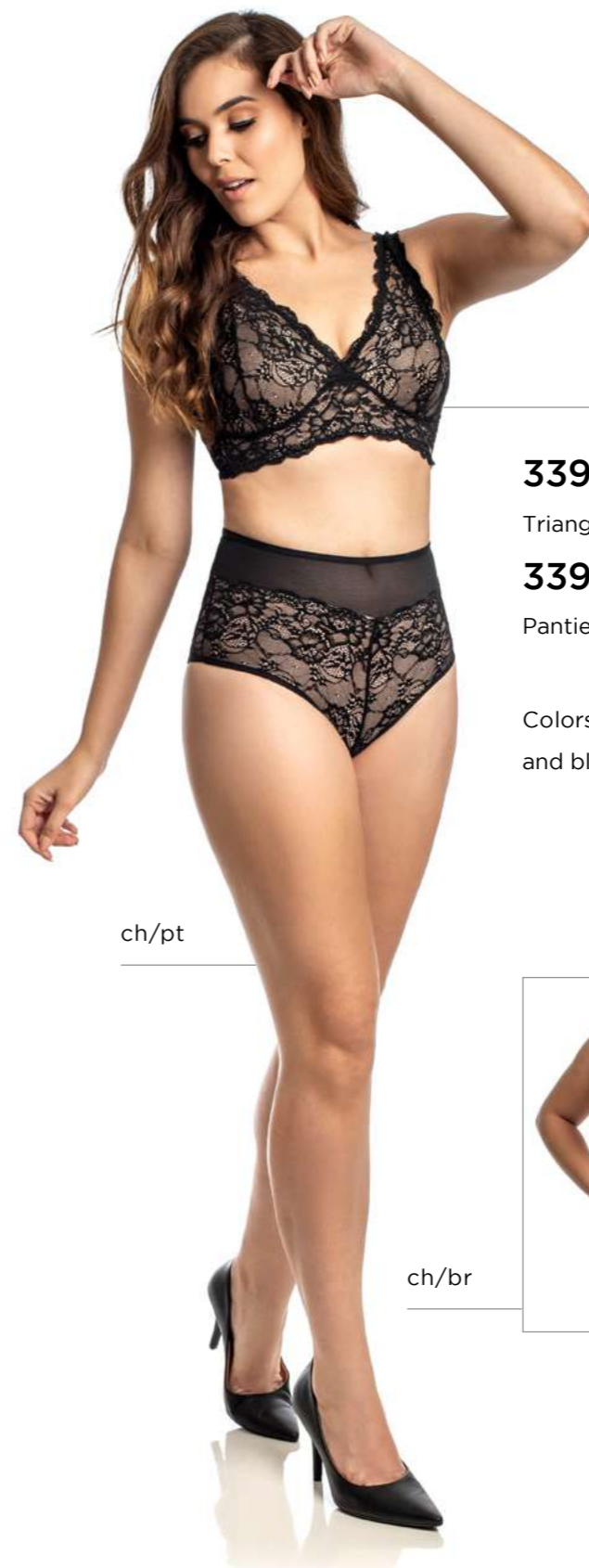


**3390**

Robe in tulle poá, with  
lace trim on the sleeves.

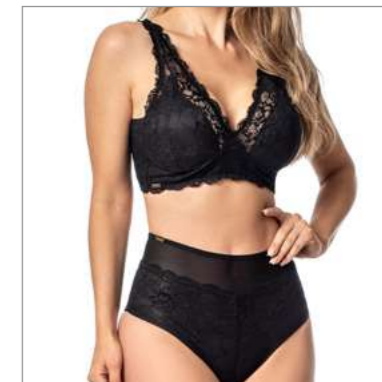






ch/pt

ch/br



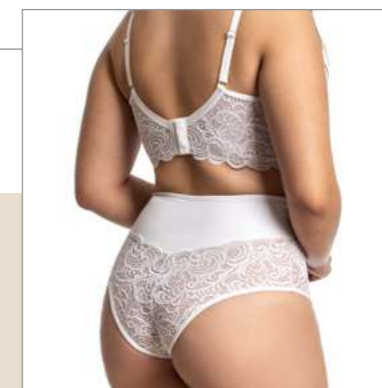
**3391**

Triangle cup lace bra.

**3392**

Panties with lace.

Colors: ch/pt, choco,  
and black ch/br.





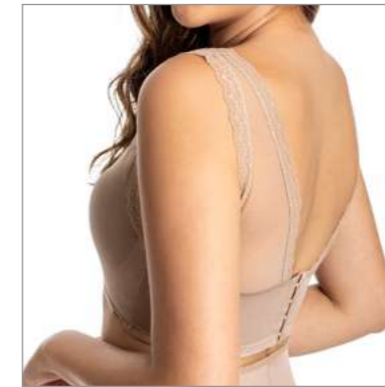


**3393**

Swimming push-up bra, with cup, lace, and tulle straps.

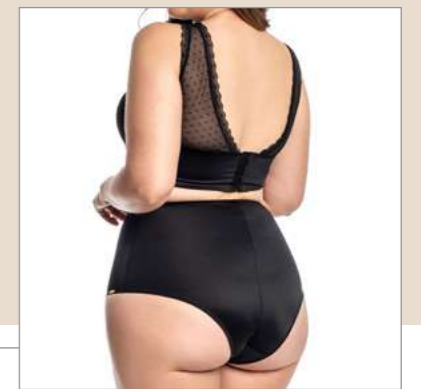
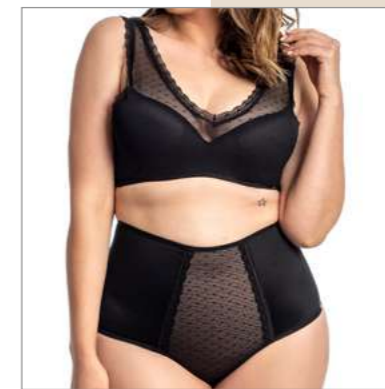
**3394**

Panties with lace and tulle detail.



**3395**

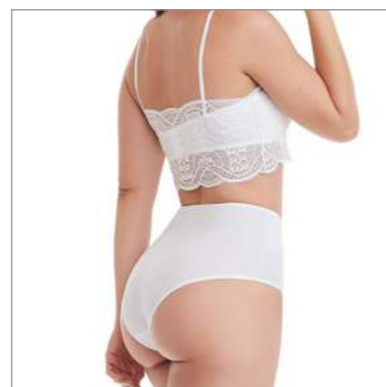
Regata bra with cup, tulle poá and lace detail.



**3396**

Panties with tulle poá and lace detail.





**3430**

Two in one cropped top in lace, bottom with bulge, optional straps.

Note: Sizes mini mini to large.

**3431**

Panties with lace.







**3432**

Non-busted bra, with lace.

**3433**

Panties with lace.



**3436**

Gouffré bra with a deep plunge neckline.

**3437**

Gouffré panties.



**3434**

Deep-cut, lace balcony bra.

**3435**

Panties with lace.



ch/pt

**3438**

Cropped bra with cup, lace detail.

**3439**

Panties with lace detail.

Color: ch/pt and black.







**3255**

Bra with bulge and lace.

**3256**

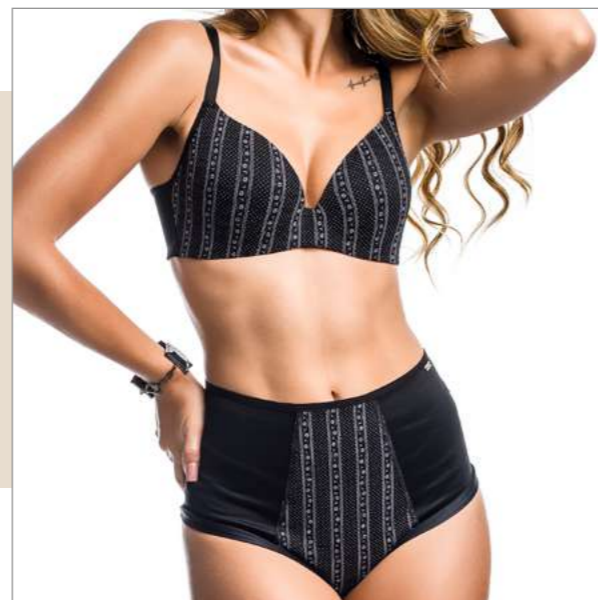
Panties with lace.



**3257**

High-waisted panties with lace.

Option: 3257 Thong.

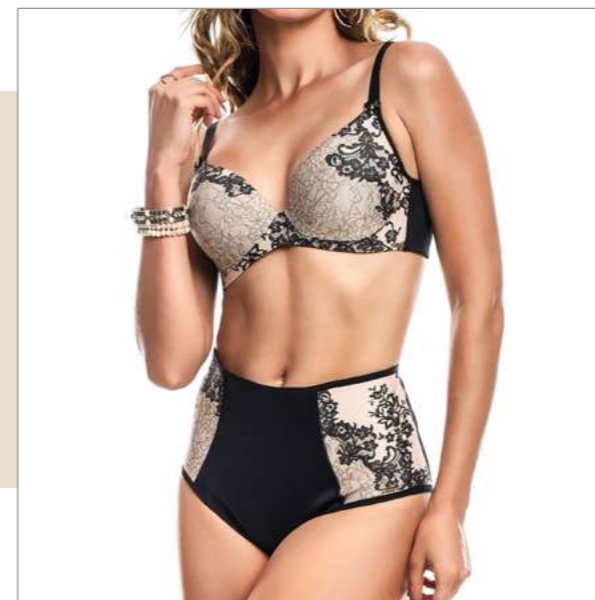


**3258**

Poá bra with bulge.

**3259**

Poá panties.

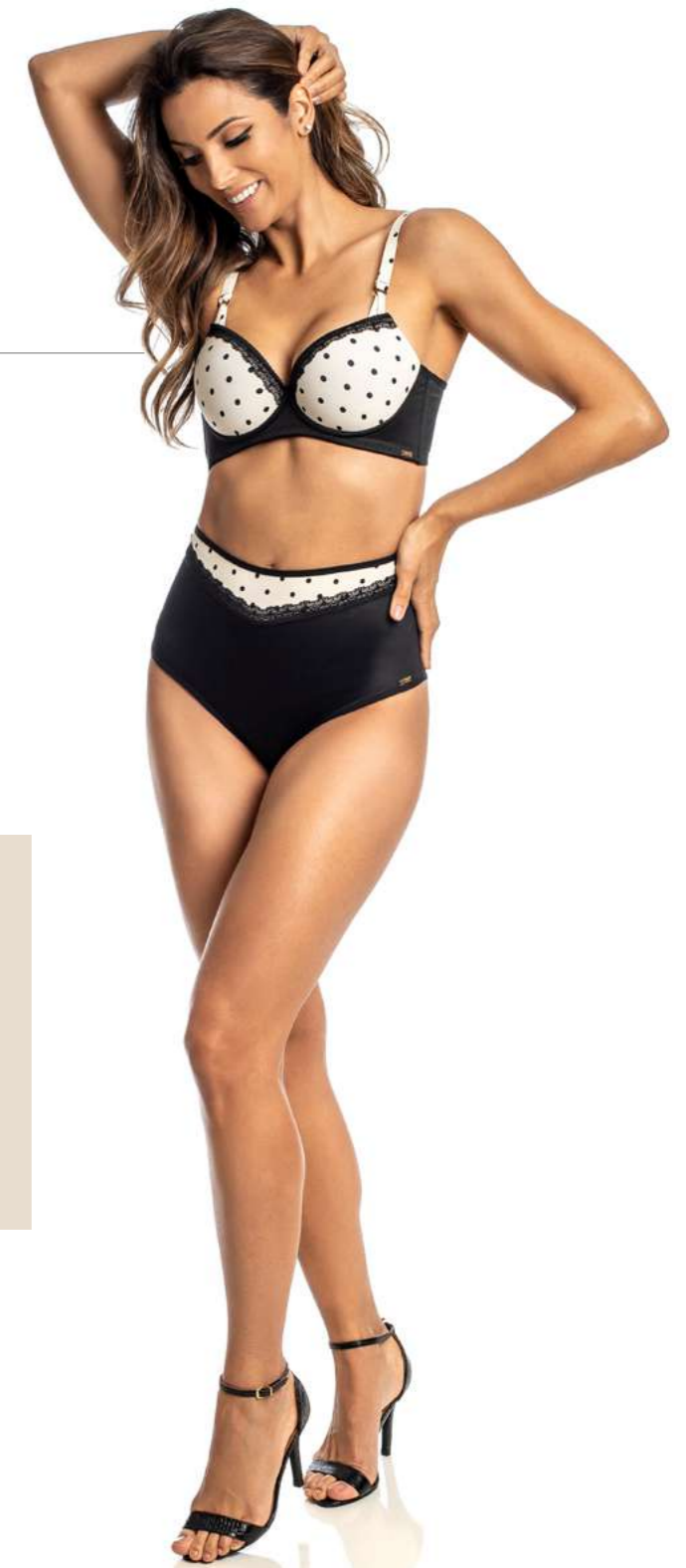


**3260**

Bra with bulge.

**3261**

Panties.



**3386**

Poá bra with bulge

**3387**

Poá panties.









**3140**

Corset bodysuit with bulge.



**3193**

Body with bulge and lace.

**3293**

Ciré bodysuit with a lace-covered bust.



mediterrane

**3293**

**3193**



**3339**

Flare pants with a modeling waistband.

Colors: Black, mediterrane, marsala and graffite.



P R E M I U M  
FITNESS











**6075**

Top.



**3218 H**

Men's fitness belt with 6 flexible fins.



**3218 E**

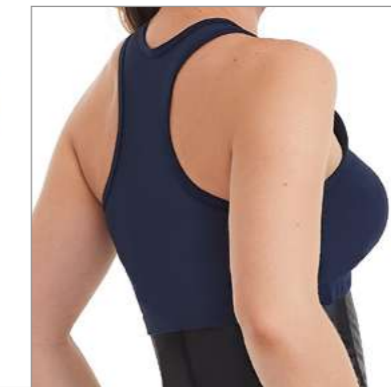
Cyre fitness belt with 6 flexible fins.



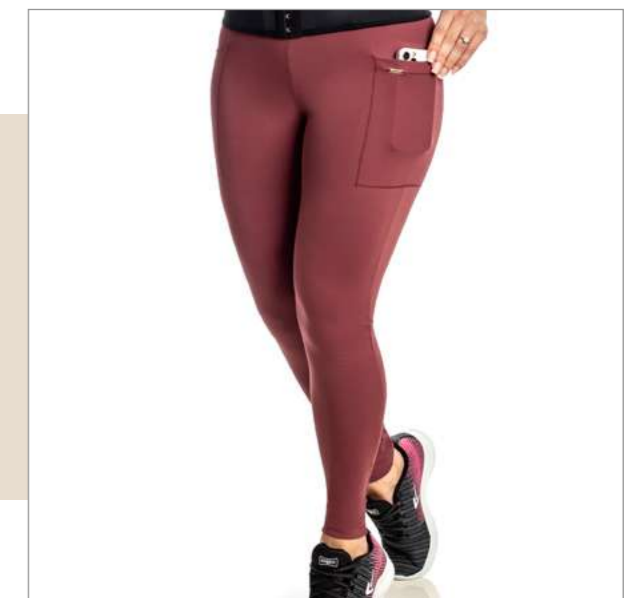
Mediterranean

**3442**

Swimming top with bulge.



Graffiti



Marsala

**3310**

Legging with shaping waistband.

Colors: Black, mediterranean,, marsala and graffiti.

Option: Emana fabric - 3113.

**3310 A**

Legging with pockets, shaping waistband.

Colors: Black, mediterranean,, marsala and graffiti.





**6075**

Top.

**3422**

High-waisted legging, with fitness girdle, 6 flexible fins.



**3441**

Modeling belt with double elastic band, adjustable with Velcro, 6 flexible fins.



**Blue Royal**

**3234 F**

T-shirt with U.V. protection.

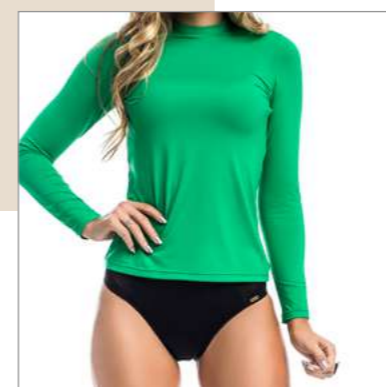


**Pink**

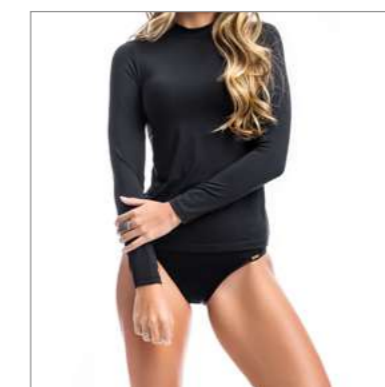


**3338**

Legging cirê with modeling waistband.



**Green**



**Black**





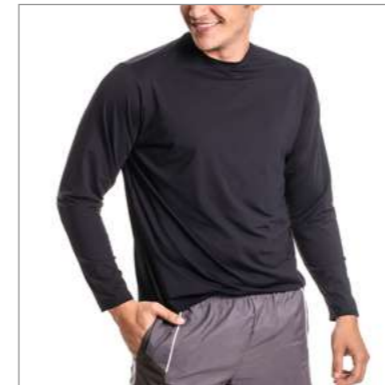
**3234 F**

T-shirt with U.V. protection.

**Tangerine**



**White**

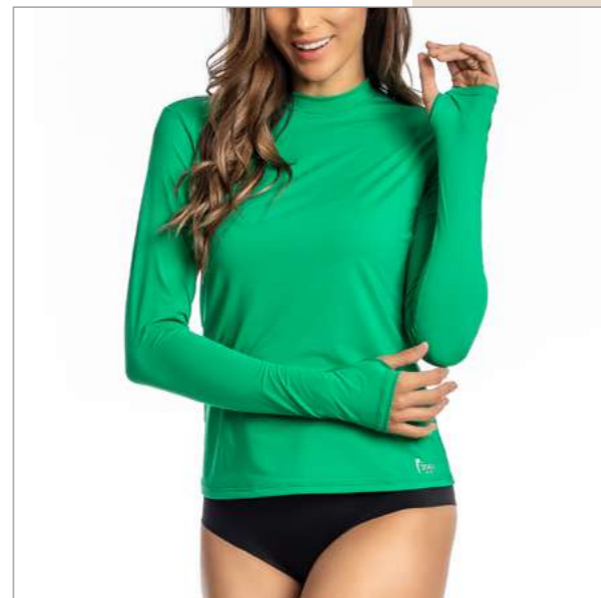


**Black**

**3234 M**

T-shirt with U.V. protection.

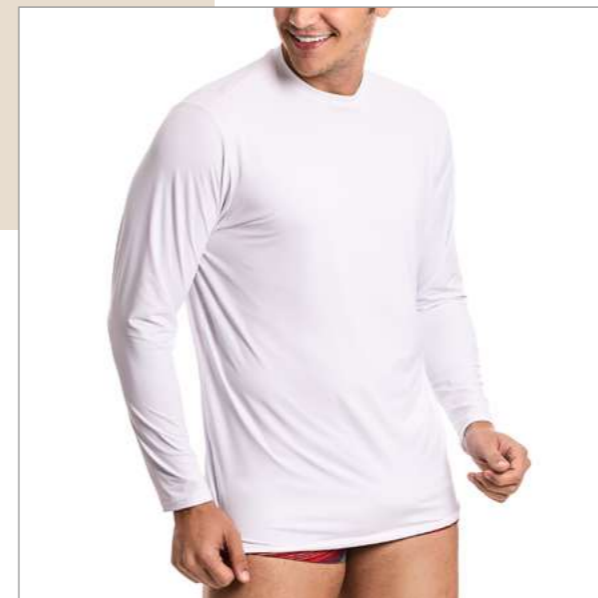
**Blue Royal**



**3234 A F**

T-shirt with U.V. protection and thumb attachment.

**Green**



**White**





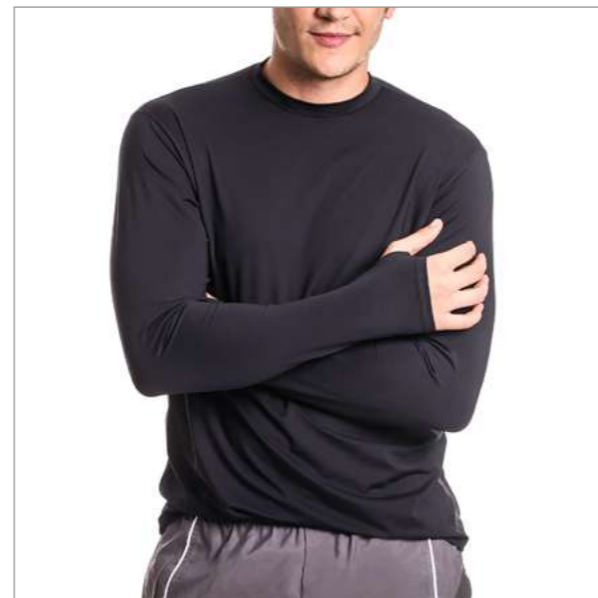
**3234 M**

T-shirt with U.V. protection.

**Folha**



**Tangerine**



**3234 A M**

T-shirt with U.V. protection and thumb attachment.

**Black**



**3276 S/D (pair)**

Glove up to the elbow, with thumb loop, U.V. protection.

Option: With fingers (W/F).

Colors: Black, white, royal blue, pink, tangerine, and green.



**3277 C/D (pair)**

Gloves up to the wrist, with fingers, U.V. protection.

Option: Fingerless, only with thumb attachment (N/F).

Colors: Black, white, royal blue, pink, tangerine, and green.





# LIGHT

MAIN  
CHARACTERISTIC:  
INTERMEDIATE  
COMPRESSION.

A line with versatile power  
and balanced weight.

**Composition:** 90% polyamide  
and 10% elastane..



*LIGHT*  
ESTHETICS AND  
POST-SURGERY







**5015 J X**

Preformed bust bra with reinforcement and no cutout, folding finish.



**5015 SH X**

Brassiere with band over bust bust, folding finish, pre-shaped bust without cutout and without reinforcement.



**5030 X**

Preformed bust bra without cutouts and without reinforcement, regatta strap.



**5029 ABL**

High-Waisted Panties.  
Note: With optional suspender straps.

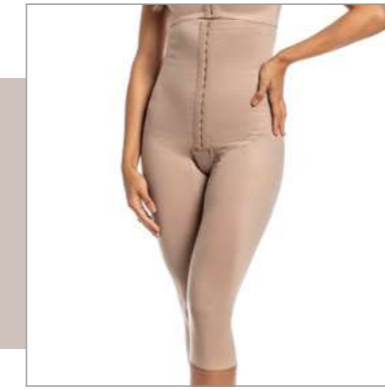


**5026**

High-waisted shorts with an open bottom.  
Note: With optional suspender straps.

**5022 X**

Bust shaper pre-molded with cutout.



**5025 AB**

High-waisted, open-bottomed pants.  
Note: With optional suspender straps.

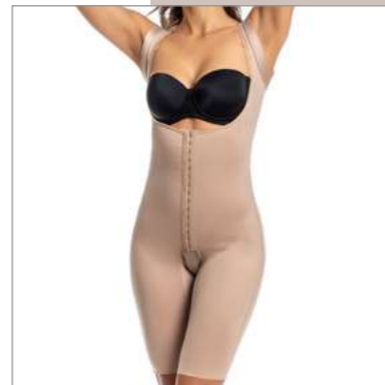
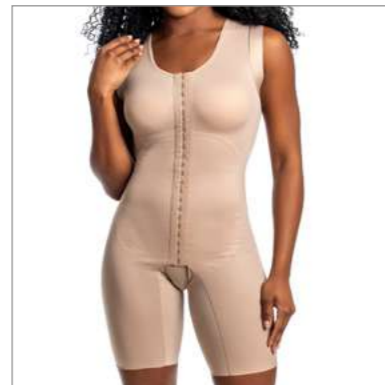






**5019/5026 X**

Shaper with front split, pre-shaped bust with no cutout, halter neck strap with clasp.



**5019 X**

Bust shaper pre-molded with cutout.

**5019/5041 X**

Bust shaper pre-shaped without cutout, regatta strap with lycra armholes.

**5297 A**

No-bust girdle, regatta strap with lycra armholes, high back.

Note: With optional adapter for handles.

Esthetics and post-surgery







**MAIN FEATURE:  
LESS  
COMPRESSION.**

A line with ultra delicate, highly refined fabric, with micro-filamented polyamide for a smoother shapewear concept.

**Composition:** 72.8% polyamide and 27.2% elastane.

*Soft*



*Soft*  
ESTHETICS AND  
POST-SURGERY





Soft



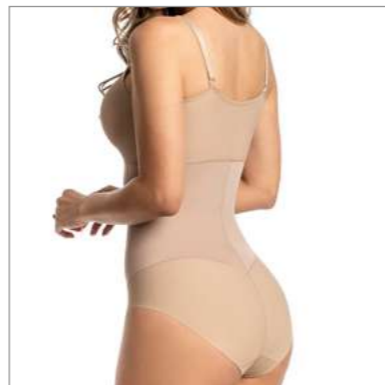
**6001**

Bust shaper  
pre-molded with cutout.



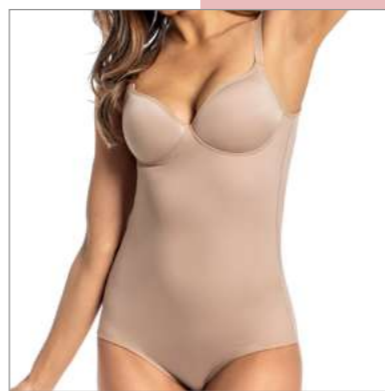
**6077**

Girdle with bulge, laser  
cut legs.



**6001 SS**

Shaper with bulge.



**6001 SS A**

Bustier girdle with no  
arch.





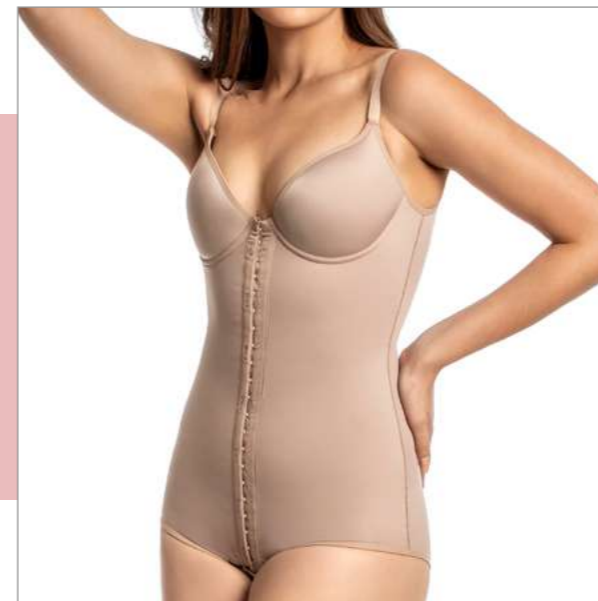


**6022 S/C**

Double shaper in the front,  
pre-shaped bust with no  
cutout.

**6022**

Bust shaper pre-molded  
with cutout.



**6022 SS**

Shaper with bulge.

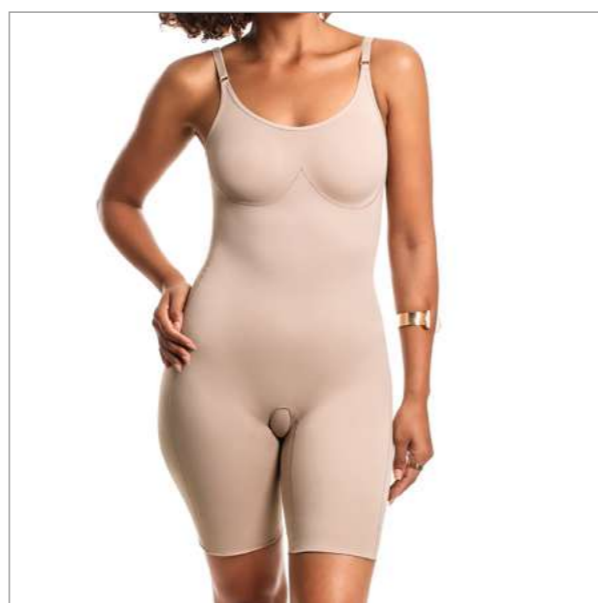


Soft



**6073**

Girdle with bulge, laser cut legs.



**6002 X**

Bust shaper pre-molded with cutout.





Soft

Soft



**6019 S/C**

Double shaper in the front, pre-shaped bust with no cutout.

**6019**

Bust shaper pre-molded with cutout.



**6019/6041**

Bust shaper pre-shaped with cut-out, regatta strap.



**6019 MF**

Shaper with short sleeves, pre-shaped bust with cutout.



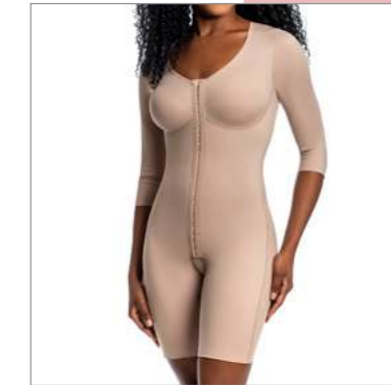
**6019/6026**

Shaper with front split, pre-shaped bust with no cutout.



**6019 SS**

Girdle with bulge.

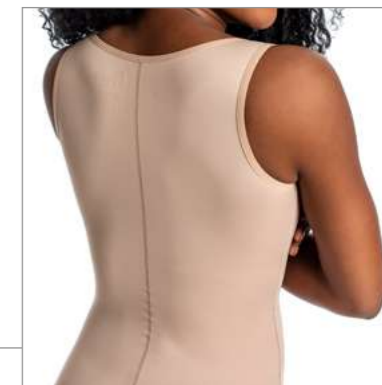
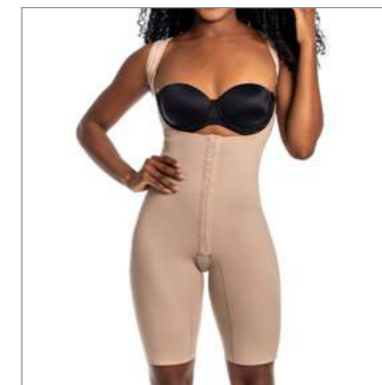


**6019 SLEEVES**

Girdle with sleeves, pre-shaped bust with cutout.



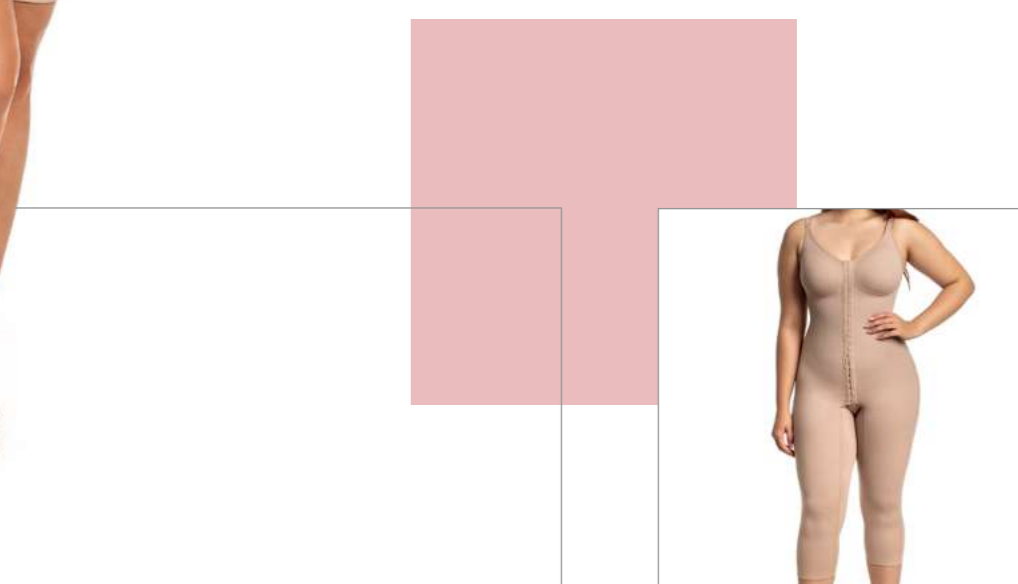




**6297 A**

No-bust girdle, high back, regatta strap.

Note: With optional adapter for handles.



**6019 SB**

No-bust girdle.

**6018**

Bust shaper pre-molded with cutout.



Soft

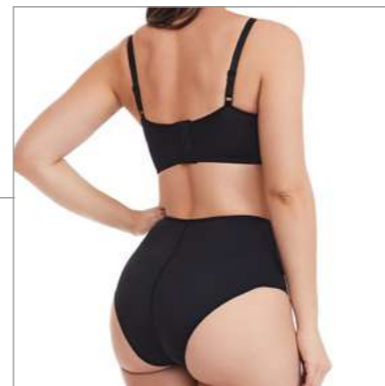


**6081**

Brassiere with cup, tulle poá and lace detail.

**6082**

Panty with tulle poá and in tulle poá and lace.



**6090**

Top brassiere with cup, lace detail.

**6091**

Lace panties.





Soft



Soft



**6006**

Panties with front reinforcement..



**6006 AS**

Double-breasted panties.



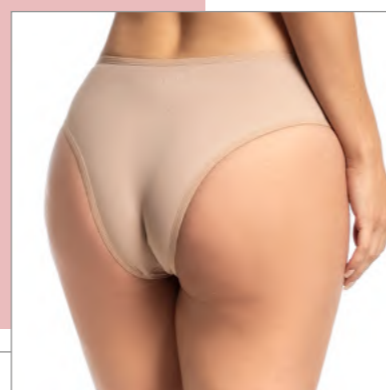
**6006 L**

Laser-cut panties.



**6006 B**

Double front panties.





Soft



**6086**

Laser-cut panties on the legs.



**6085**

Double-fronted panties, laser cut on the gluteal area.

158

Esthetics and post-surgery



159



Soft



Soft



**6084**

Double g-string panty with lace detail.

**6083**

Swimming push-up bra, with bulge, lace detail.



**6076**

High-waisted panty, laser-cut legs.

**6028**

High-Waisted Panties.



**6087**

Thong panty, with laser cut legs

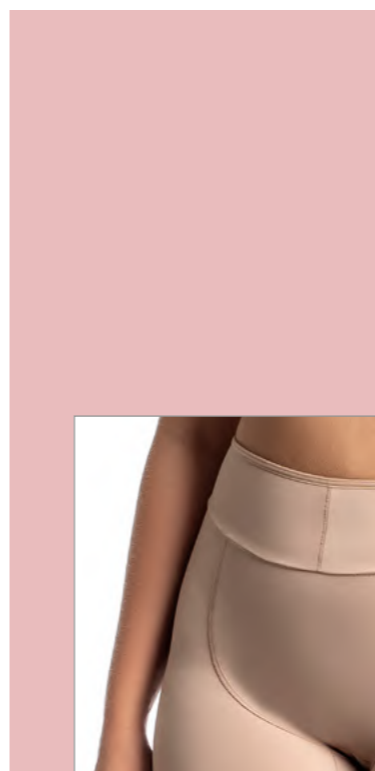


**6074**

High-waisted thong panties.



Soft



**6004 FF**

Shorts with closed bottom.



**6004 AS**

Shorts with double waistband, closed bottom.

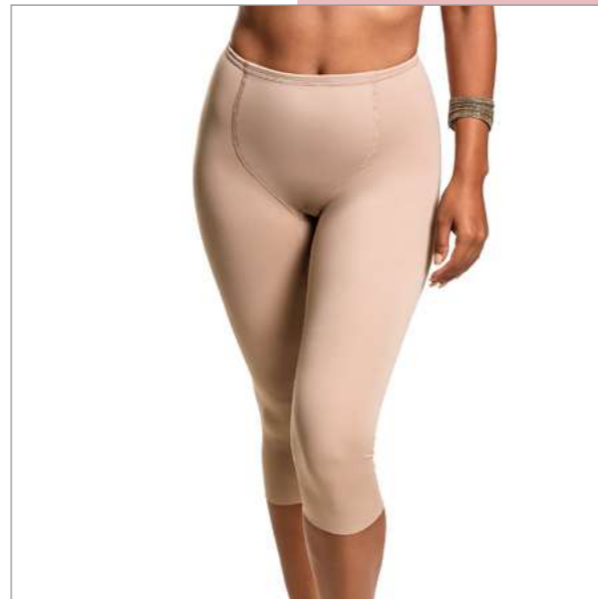


Soft



**6023**

High-waisted shorts  
with a closed bottom.



**6024**

Closed bottom pants



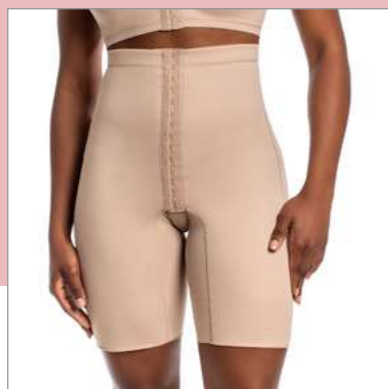


Soft

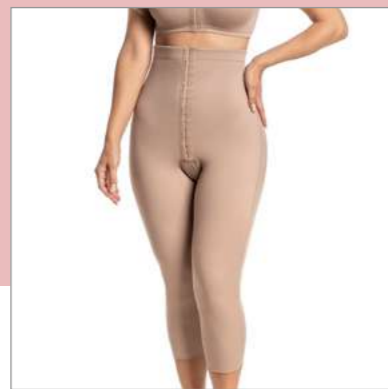


**6029 ABF**  
High waisted panties.

**6029 ABL**  
High waisted panties.



**6026**  
High-waisted shorts  
with open bottom.



**6025 AB**  
High-waisted,  
open-bottom pants

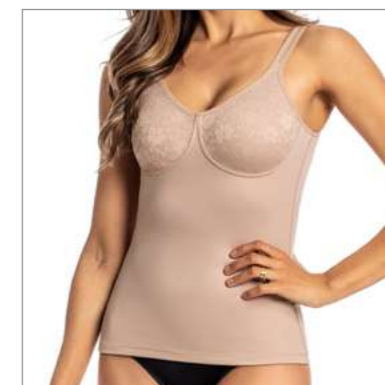






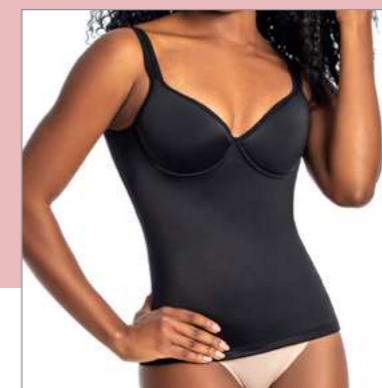
**6070**

Pre-shaped bust t-shirt with cut-outs.



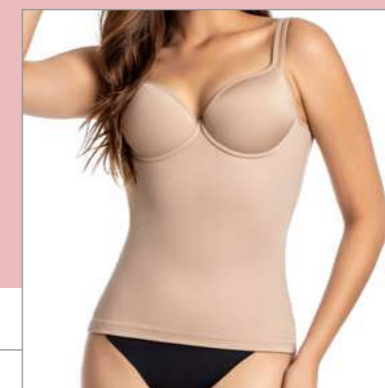
**6070 LAISE**

Pre-molded bust t-shirt lined in lace, with cut-outs.



**6070 SS**

T-shirt with bulge.



Option: 6070 SS AB T-shirt with bustier, front opening.



Soft



**6013 SS**

Brassiere with cup.



**6071**

Brassiere with cup "Extra Comfort".



**6072**

Brassiere with goufré detail, with cup.

Note.: Sizes mini mini to big.

Esthetics and post-surgery





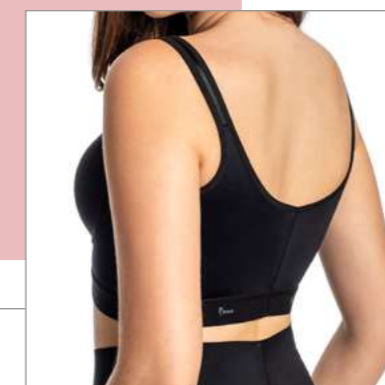


**6075**

Double-front bra,  
with personalized elastic  
band, pre-shaped bust.

**6013**

Pre-shaped bust bra with  
cut-outs.



**6079**

Pre-shaped bust top with cut-  
outs and reinforcement,  
personalized elastic band.



Soft



Soft



**6015 E**

Pre-shaped bust bra without cutouts and without reinforcement.



**6015 SWIMMER**

Swimmer bra, pre-molded bust with cutouts and reinforcement.



**6030**

Preformed bust bra without cutouts and without reinforcement, regatta strap



**6015/6030**

Pre-shaped bust bra with cut-outs and reinforcement, regatta strap.



**6015**

Pre-shaped bust bra with cut-outs and reinforcement.



**6030 AL 6015**

Preformed bust bra without cutouts and without reinforcement, side sewing.



**6030 SLEEVES**

Bra with sleeves, pre-shaped bust with no cutout and no reinforcement.



*Soft*  
PREGNANT  
AND  
POST-PARTUM





Soft



Soft



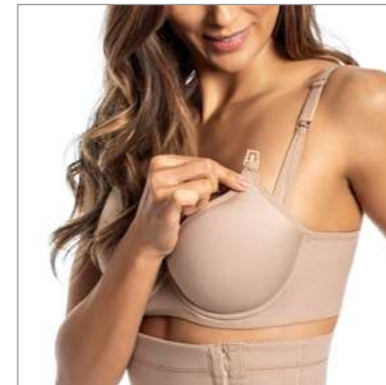
**6034 FF**

High-waisted shorts with a closed bottom.



**6034 A**

High waisted panty



**6013 SS CA**

Brassiere with cup.

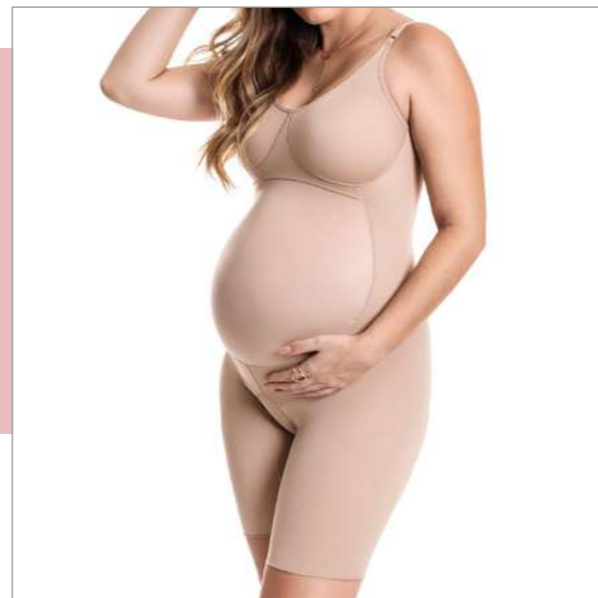
**6013 CA**

Pre-shaped bust bra with cut-outs.



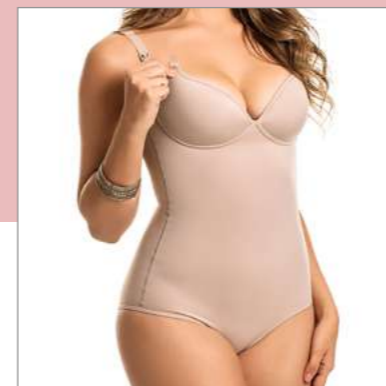
**6029 ABL**

High waisted panty



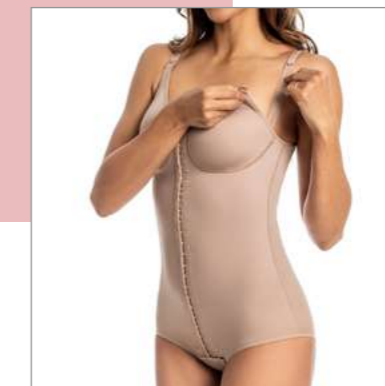
**6033**

Pre-shaped bust modeler with cutout, closed bottom



**6001 SS CA**

Girdle with bulge



**6022 CA**

Pre-molded bust modeler with cutout



**6019 CA**

Pre-molded bust shaper with cutout..



*Soft*  
MALE





Soft



Soft



**6069 M**  
T-shirt with back reinforcement.



**6009 TC AB**  
T-shirt.

**6041 H**  
Vest.

**6009 H**  
Underpants



**6009 TC**  
T-shirt.



**6069 A M**  
T-shirt with back reinforcement.





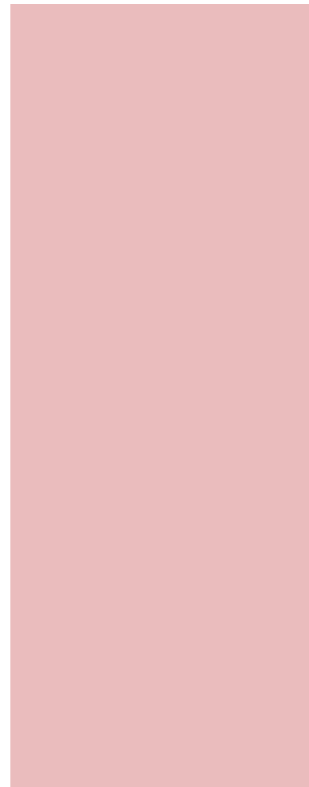
Soft



Soft



**6009/6041 YS AB**  
Girdle with high neckline



**6009/6041 AB**  
Girdle with high neckline



**6029 M**  
High waist belt.



**6028 M**  
High waist belt.



**6009 S**  
Underpants





### 3070

YOGA Glycerin Soap

Neutral, PH balanced and 100% vegetable. Formulated for washing YOGA products, lingerie and delicate clothes..

